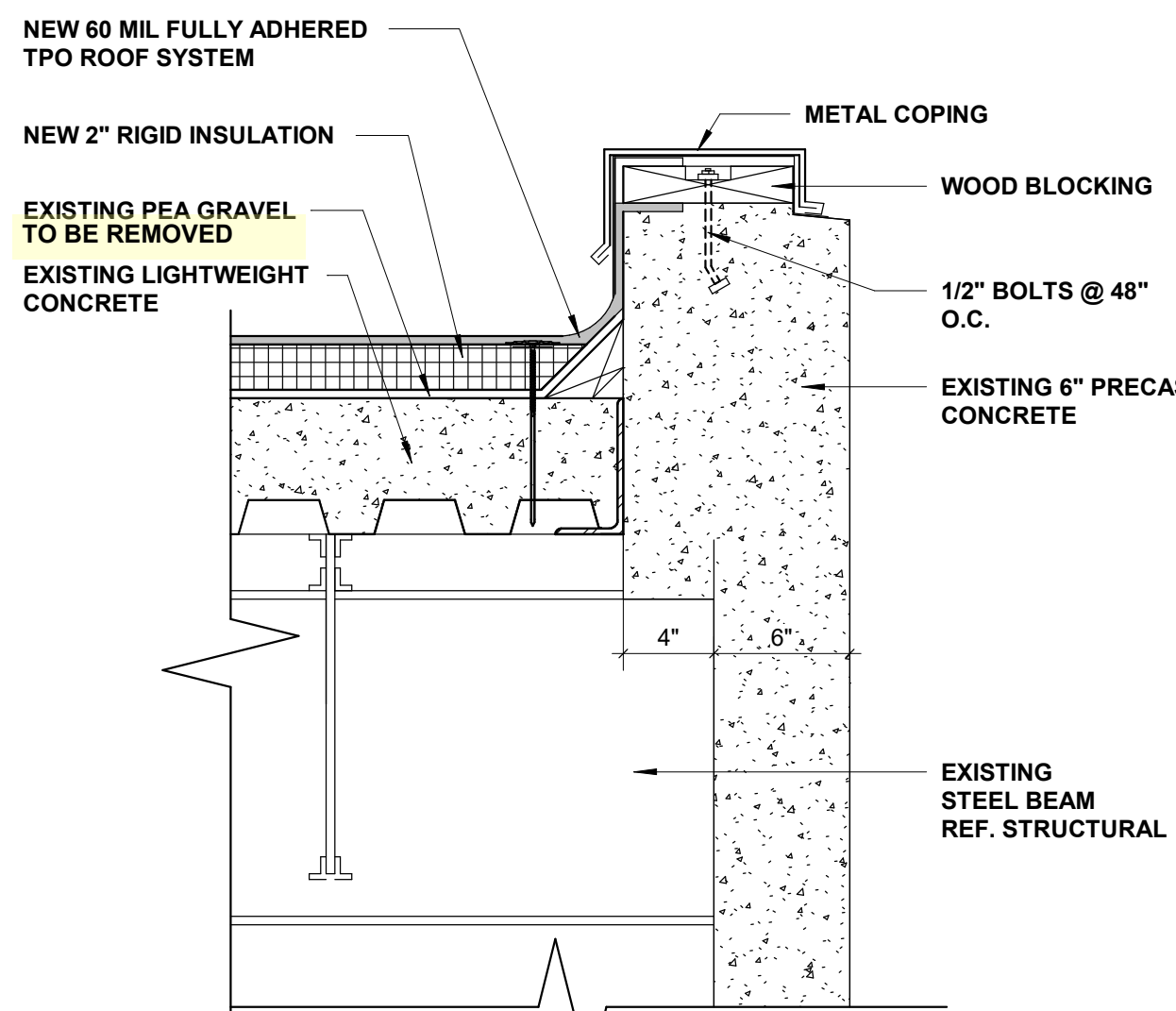


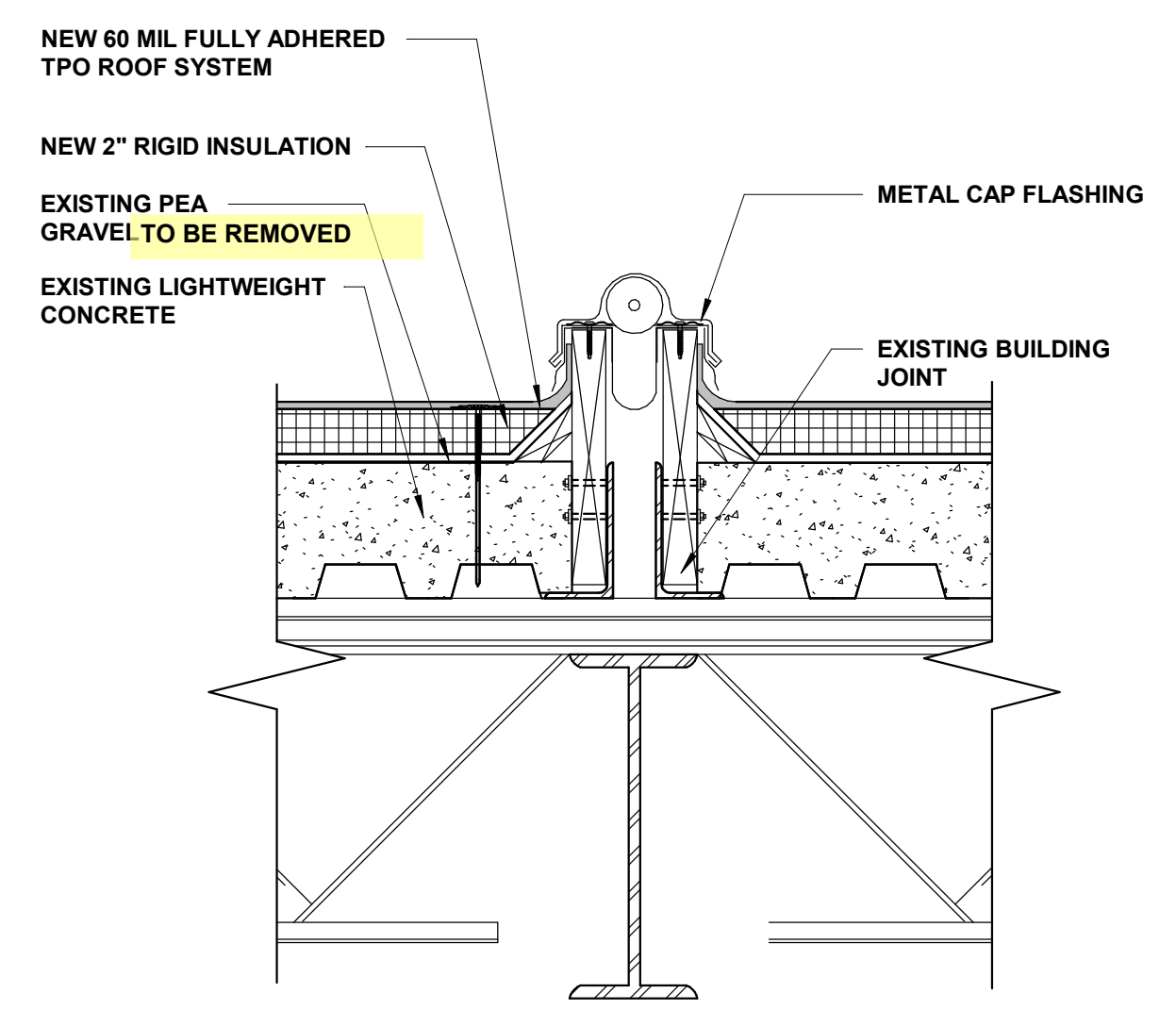


# Renaissance Group

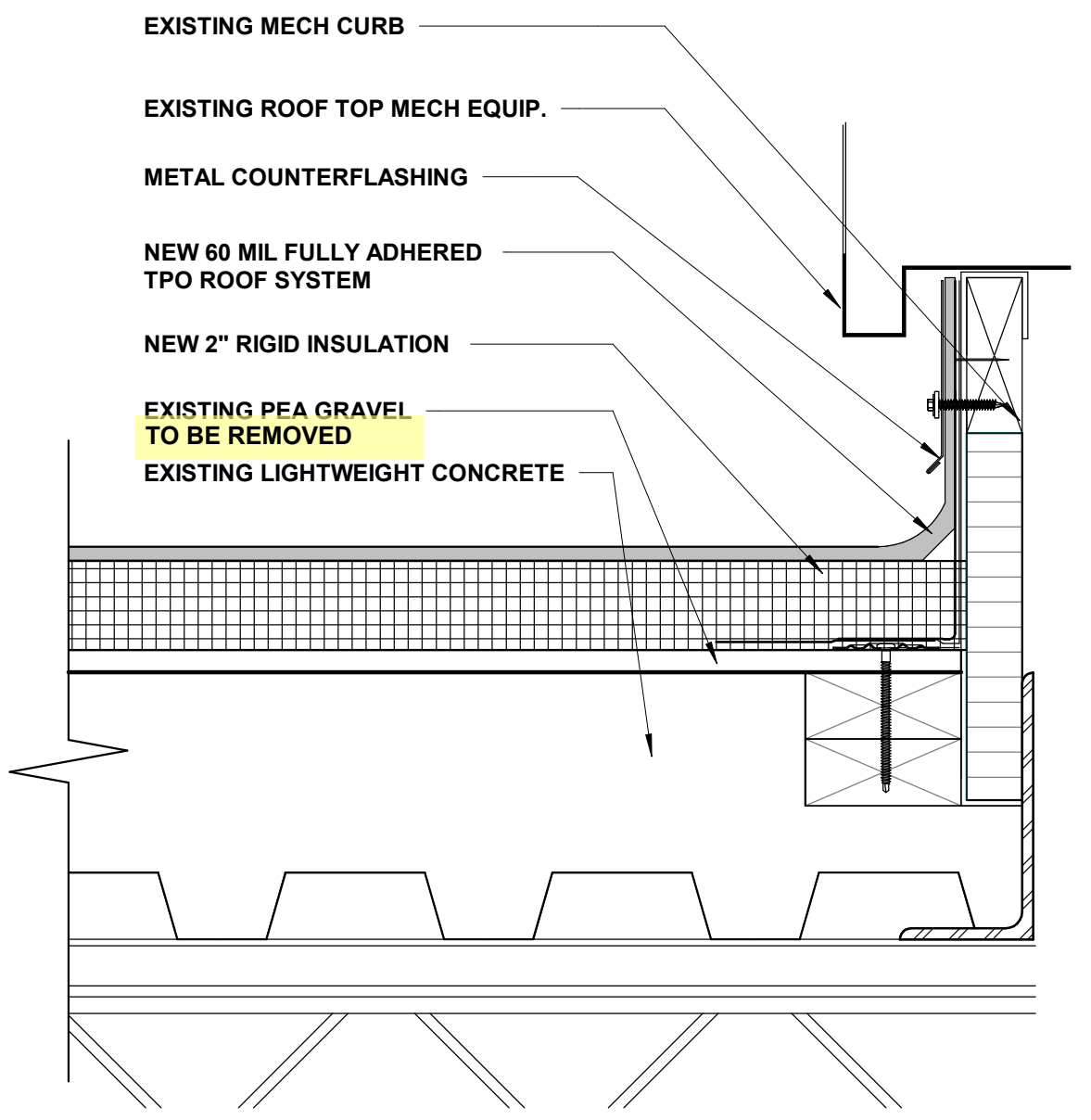
9700 Village Circle, ste.100  
Lakeland, TN 38002  
901.332.5533  
fax: 901.332.5534  
www.rgroup.biz



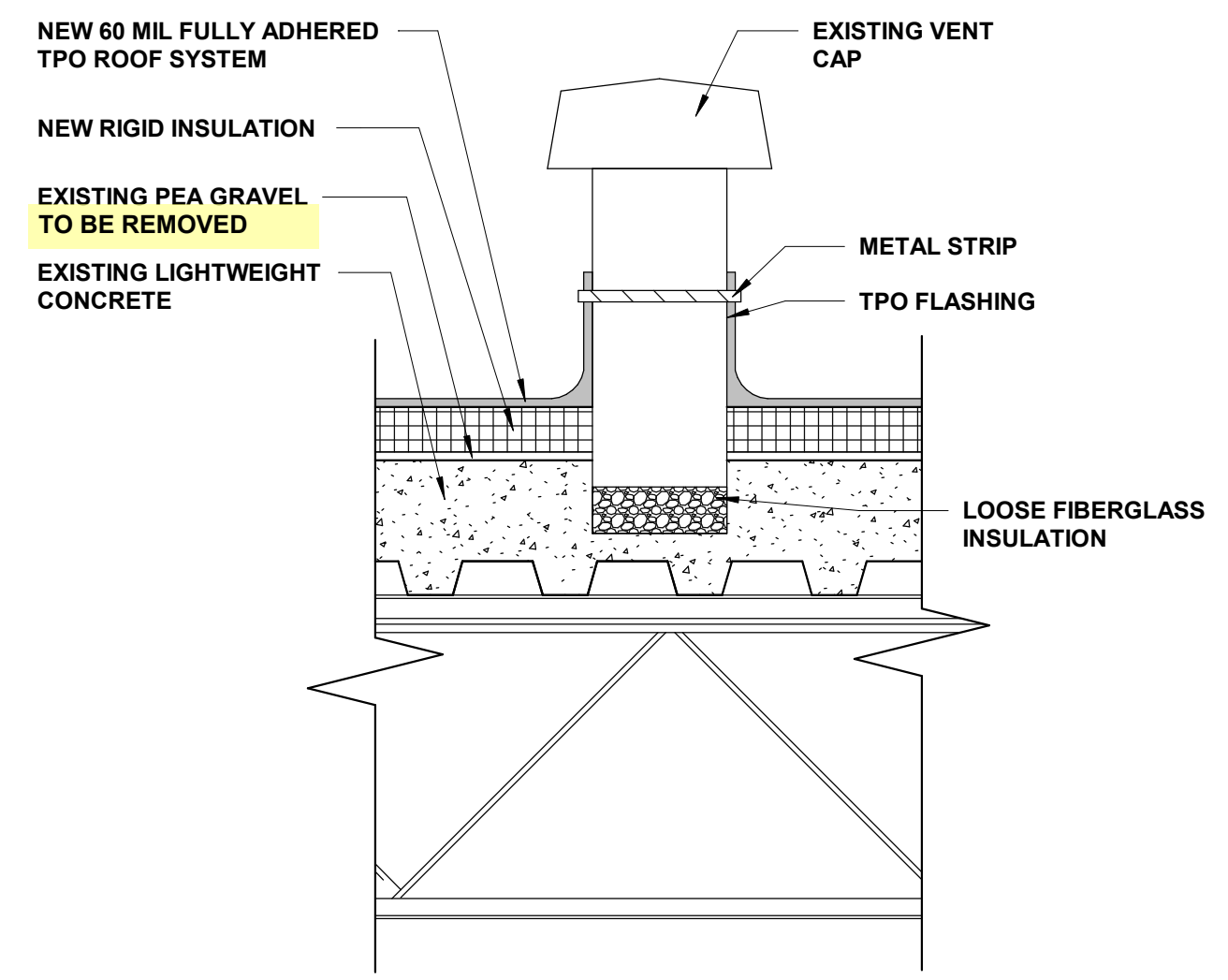
1 TYP. DETAIL @ ROOF EDGE  
1 1/2" = 1'-0"



2 DETAIL @ ROOF EXPANSION JOINT  
1 1/2" = 1'-0"

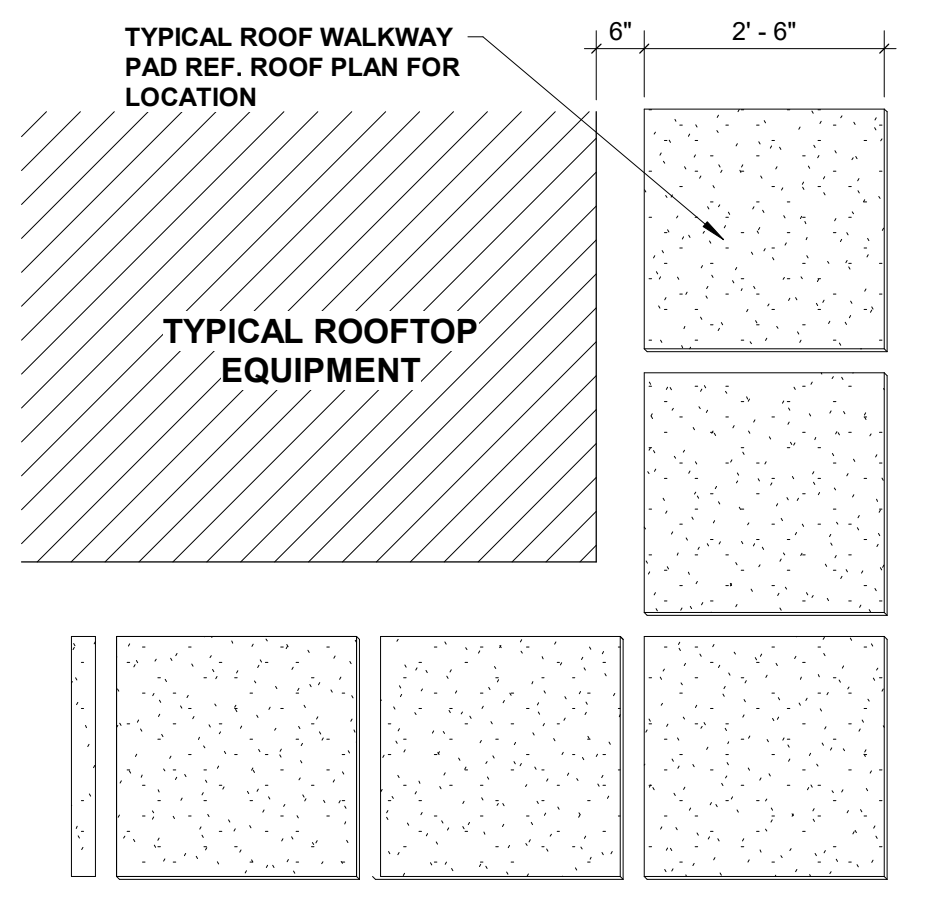


3 TYP. FLASHING DETAIL @ CURB  
3" = 1'-0"

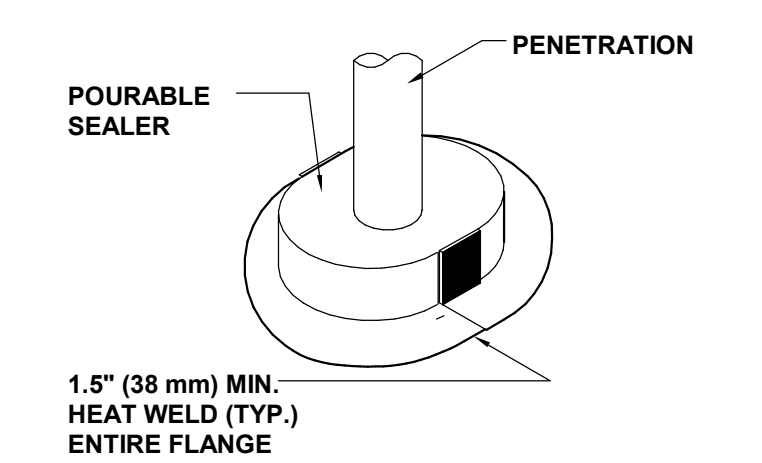


4 TYPICAL ROOF RELIEF VENT  
1 1/2" = 1'-0"

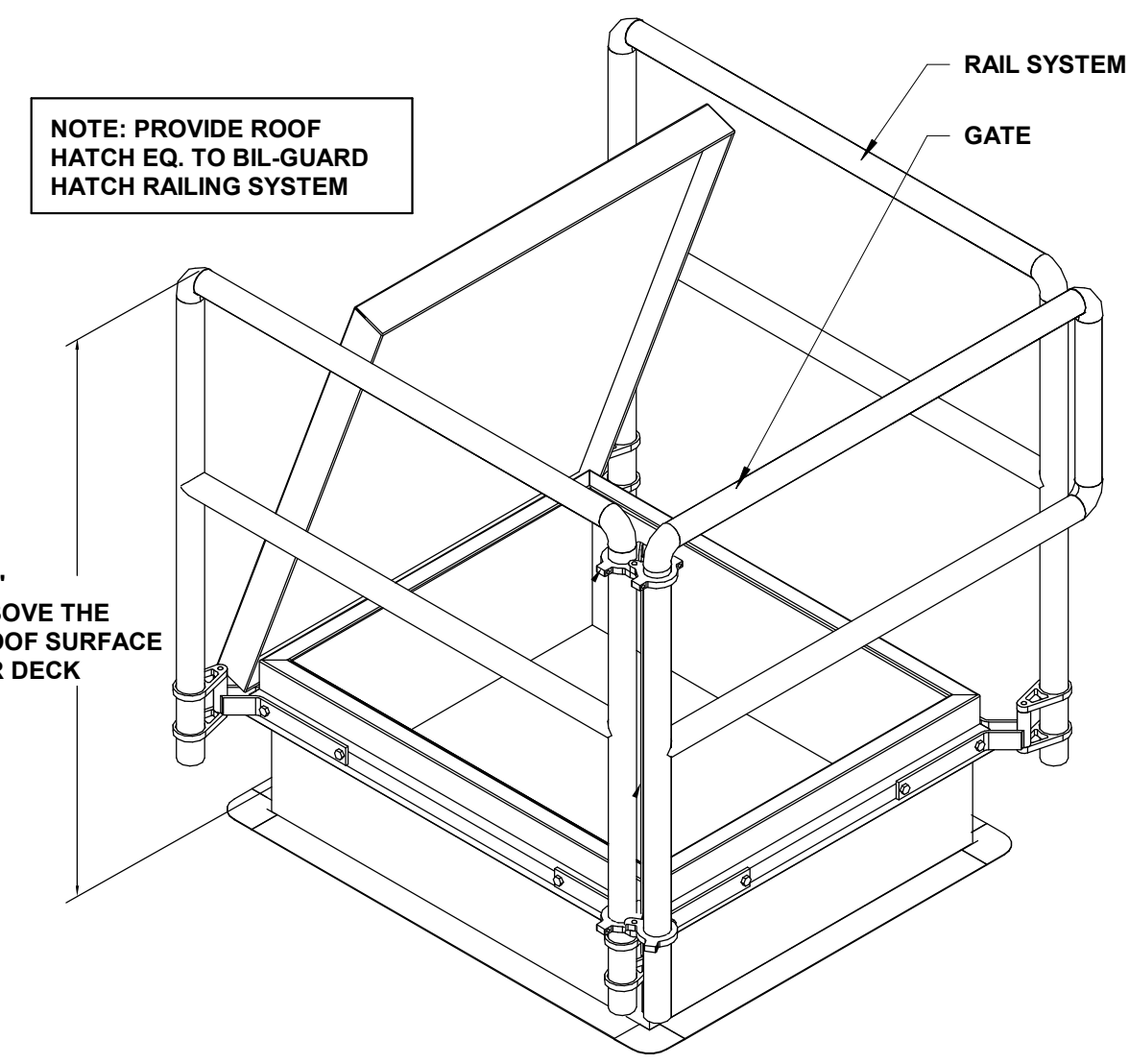
**SAFETY NOTE:** THE ENVIRONMENTAL REPORT PROVIDED BY THE AIRPORT AUTHORITY INDICATES THE PRESENCE OF ASBESTOS ON THE EXISTING ROOF SYSTEM AT THIS FACILITY. THE BUILDING WILL REMAIN OCCUPIED DURING REROOFING, IT SHALL BE THE CONTRACTOR'S RESPONSIBILITY FOR THE SAFETY AND WELL BEING OF THE WORKERS AND TENANTS OF THE FACILITY. THE WORK SHALL COMPLY WITH OSHA GUIDELINES AND RECOMMENDATIONS.



5 WALKPAD DETAILS  
1/2" = 1'-0"

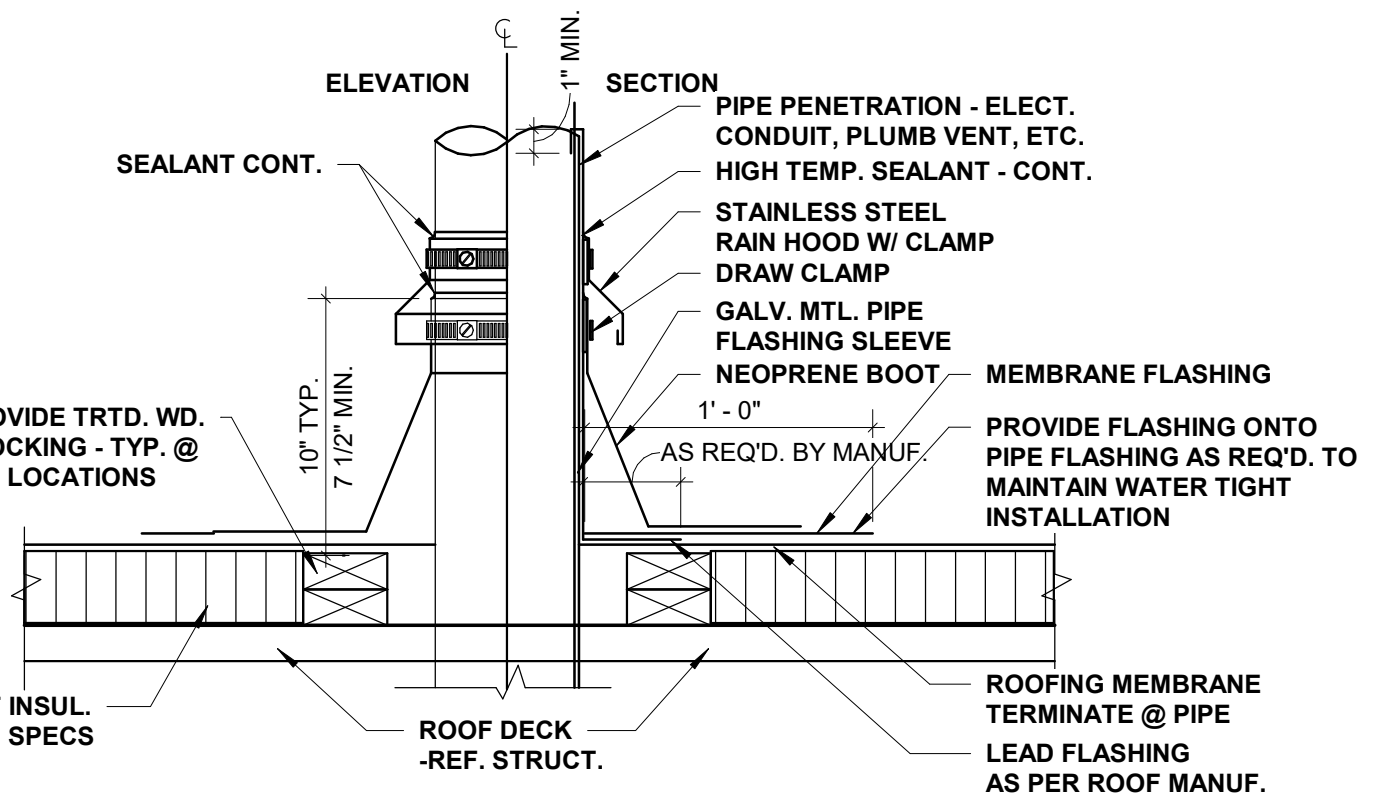


6 ROOF POCKET  
6" = 1'-0"

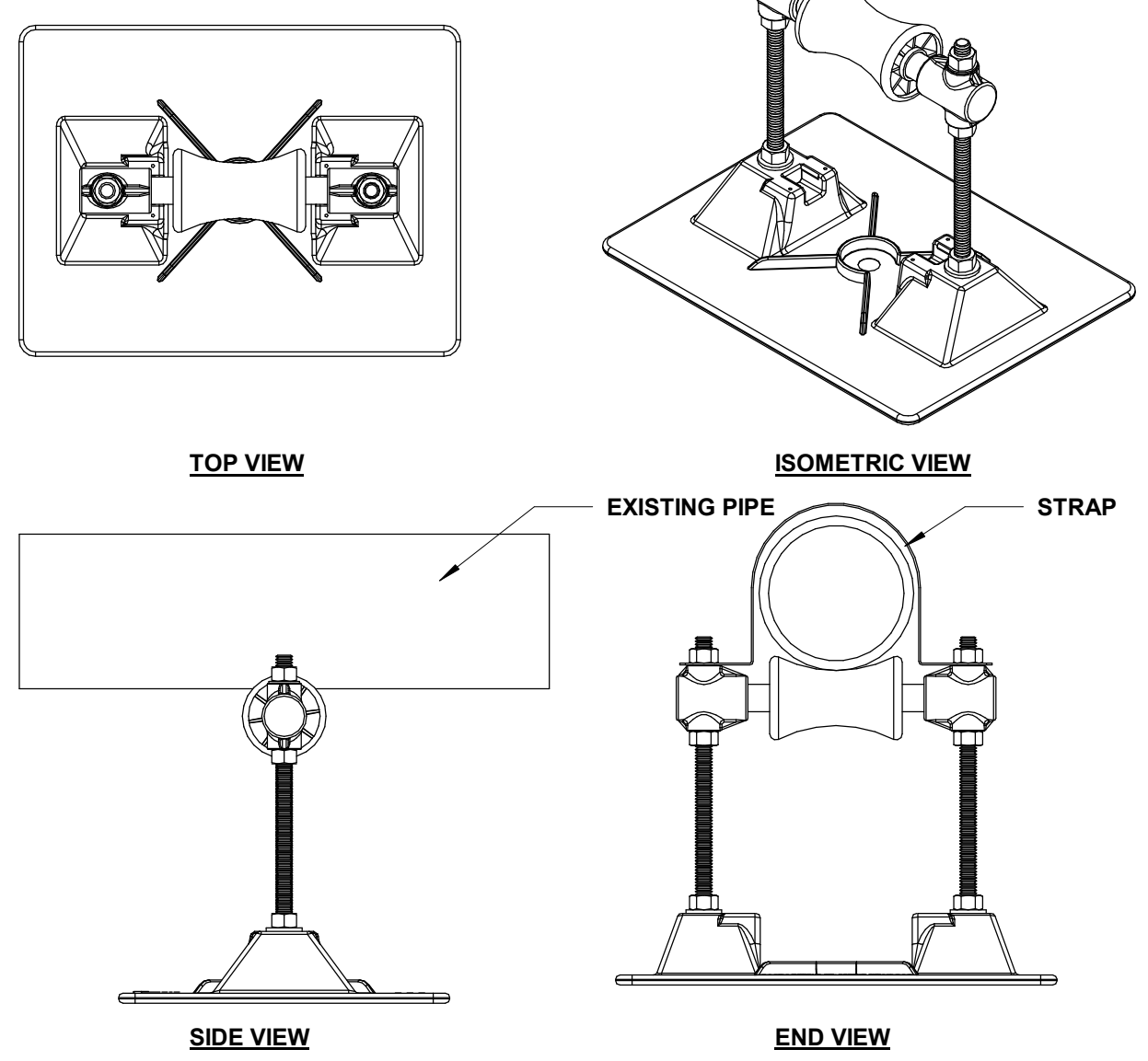


7 HATCH SAFETY RAIL AND GATE  
1 1/2" = 1'-0"

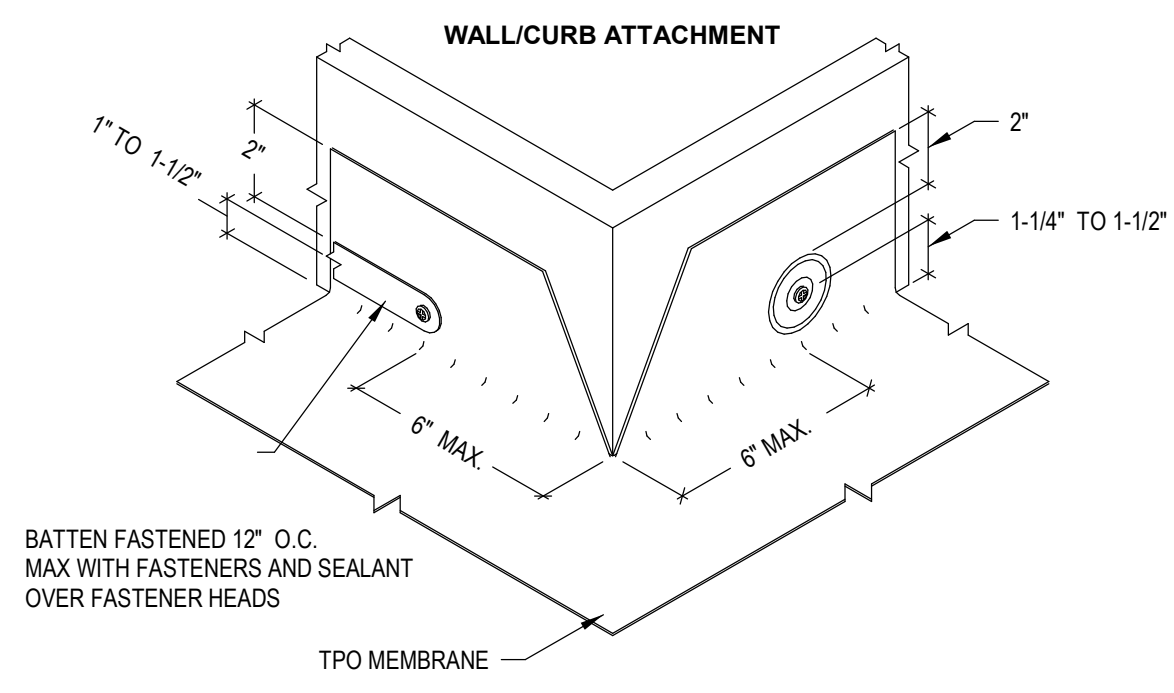
REV	DESCRIPTION	DATE



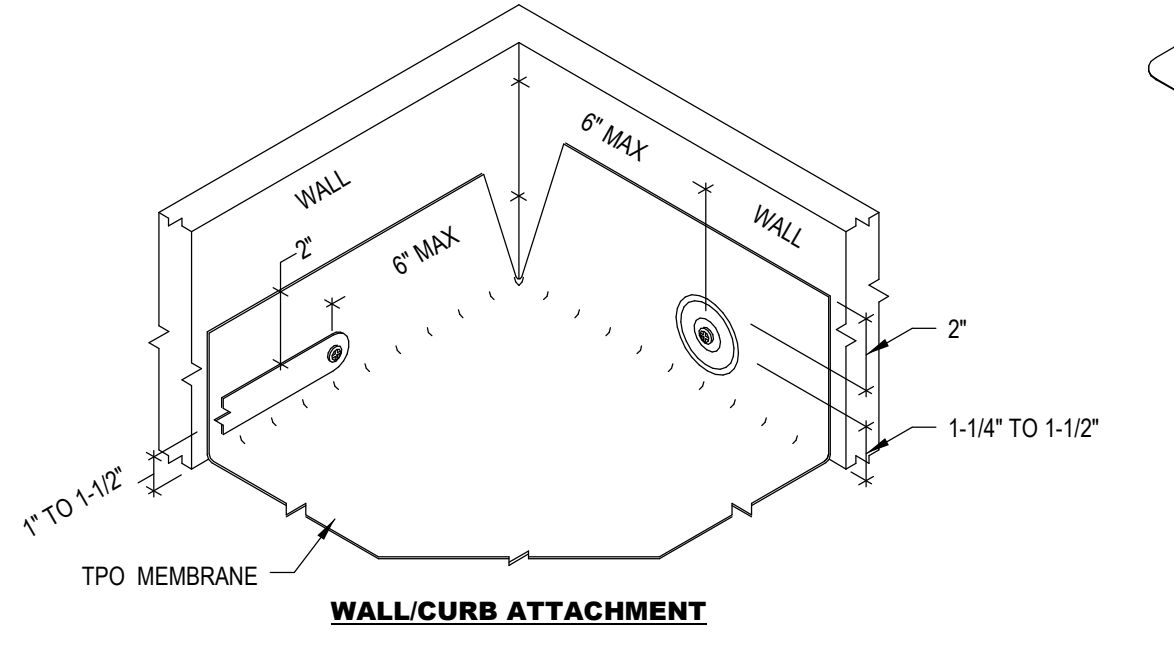
8 ROOF PENETRATION DETAIL  
1 1/2" = 1'-0"



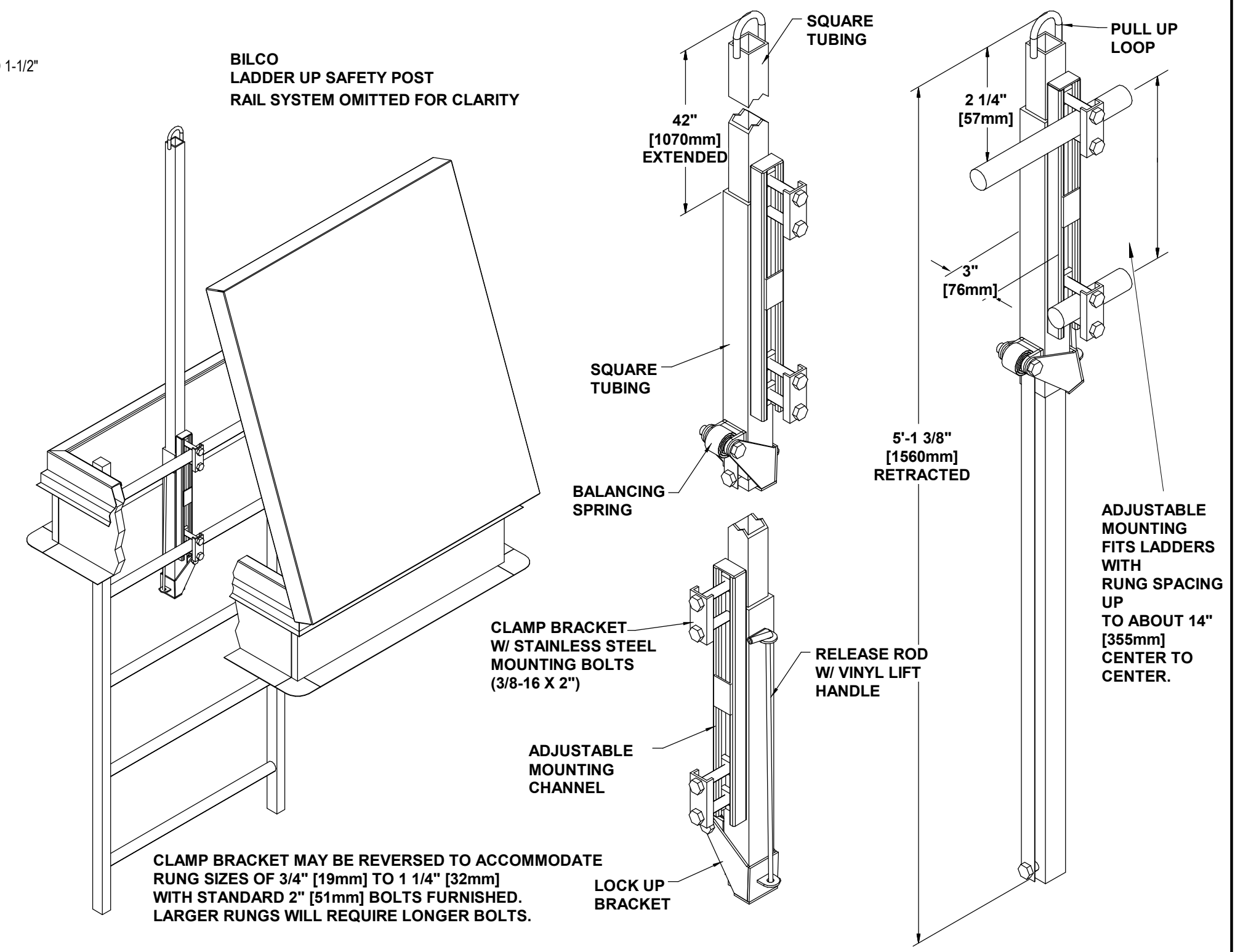
9 PIPE SUPPORT (TYP.)  
3" = 1'-0"



10 TPO @ OUTSIDE CORNER  
6" = 1'-0"



11 TPO @ INSIDE CORNER  
6" = 1'-0"



12 DETAIL @ LADDER UP SAFETY POST  
1 1/2" = 1'-0"

## MSCAA CARGO 4 BUILDING REROOF CARGO ROAD

Sheet Title:  
ROOF DETAILS

Project No:  
20008-T40

Drawn by:  
RGI

Date:  
01-19-2023

# A2.4