



TAKE OFF WITH US

# Memphis

---

INTERNATIONAL AIRPORT

## Operations Report

February 19, 2026

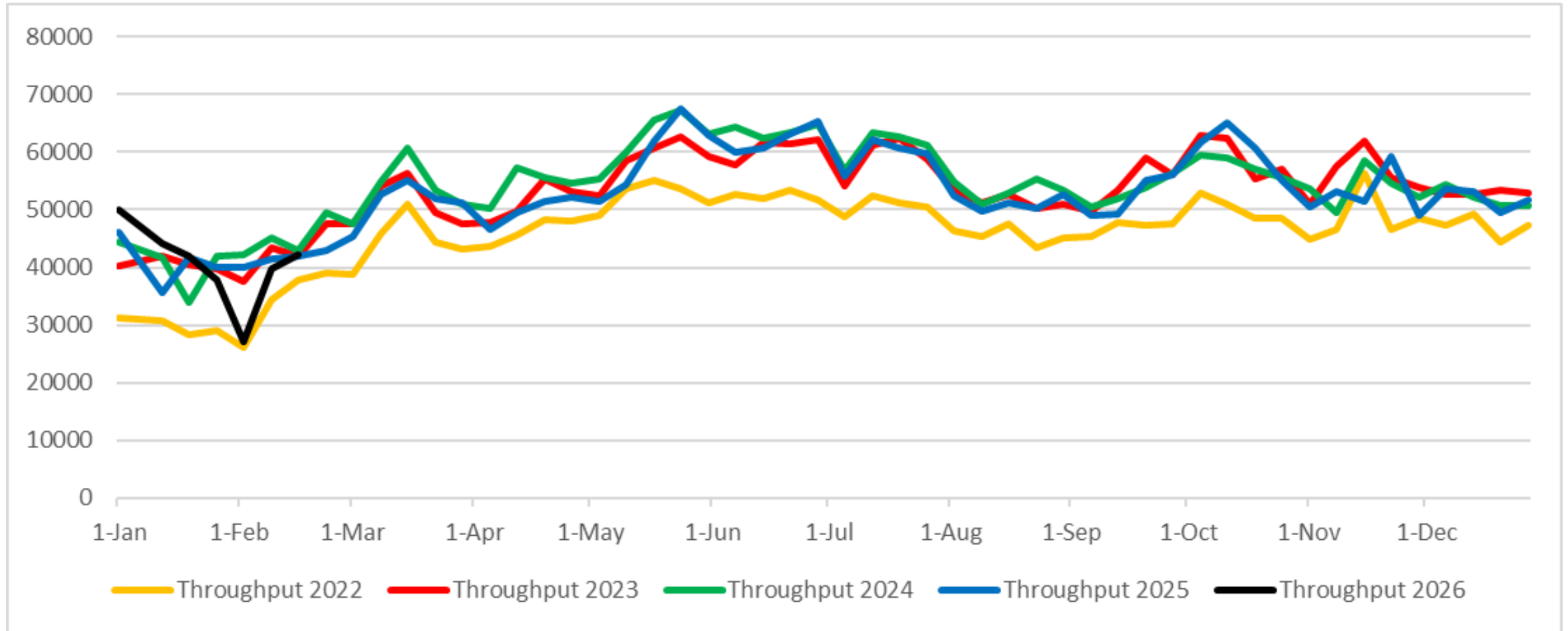
# TSA Activity Recap

---





# MEM Weekly Checkpoint Throughput Comparison





# Spring Break 2026 Travel Period

- Most local schools off March 16<sup>th</sup> – 20<sup>th</sup>
- Five-Day Peak Travel Period – Thursday, March 12<sup>th</sup> – Monday, March 16<sup>th</sup>.

	2026 (Projected)		
	Available Seats	Load Factor	Projected Throughput
Thursday, March 12, 2026	9,570	98%	9,878
Friday, March 13, 2026	9,240	100%	9,740
Saturday, March 14, 2026	7,076	100%	7,576
Sunday, March 15, 2026	10,192	100%	10,492
Monday, March 16, 2026	9,417	95%	9,446
Total/Average	45,495	98.6%	47,132
vs. 2024	3.8%		0.2%
vs. 2025	-1.5%		1.5%

- Throughputs should be close to 2024 and 2025 numbers
- Spring Break 2024 – 47,020; Spring Break 2025 - 46,457



# TSA ConfirmID Rollout

## Don't Have an Acceptable Form of Identification?



Scan the QR code to pay the \$45 TSA ConfirmID fee or visit [tsa.gov/ConfirmID](https://www.tsa.gov/ConfirmID).

### Acceptable Forms of Identification\* Include:

- U.S. Passport or Passport Card
- U.S. Department of Defense ID
- DHS Trusted Traveler Card
- REAL ID or Enhanced Driver's License
- Enhanced Tribal Cards

\*Visit [tsa.gov/ID](https://www.tsa.gov/ID) for the full list of acceptable forms of identification.



[tsa.gov](https://www.tsa.gov)



Confirm ID Passenger Assistance Area – B Lobby

Since the February 1<sup>st</sup> roll-out, the number of passengers presenting pay.gov receipts at the MEM checkpoint continues to decline daily.

# Maintenance & Development

---



# TMSP – Outer Road – Demo/Replacement

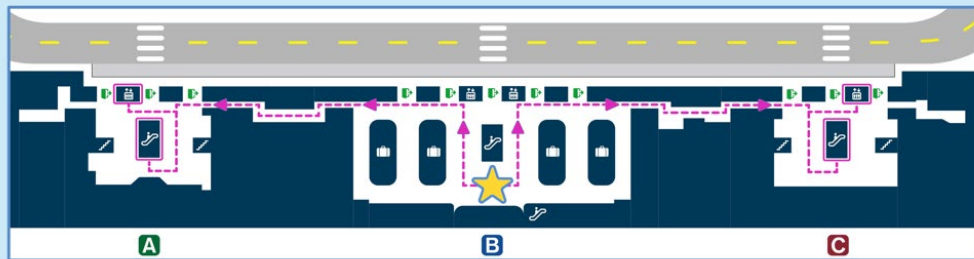
- Outer Roadway Demolition preparation efforts started on September 10, 2025.
- Drilling has started for the new roadway structure.
- Terminal B Pedestrian Tunnel closed on 10/21/25. Work anticipated to be completed by early March.

## ❖ OUTER ROADWAY IMPACTS:

- Terminal B Pedestrian Tunnel is closed. All pedestrian traffic routed to Terminal A and Terminal C.
- Coach Buses moved from upper/outer drive to upper/inner drive with staging area near Blue Lot.
- Lower/outer drive and lower/middle drive are closed.
- Annex and Vendor Lot access has been relocated
- Access to/from parking is being restricted to dedicated crosswalks.
- Commercial traffic was transitioned to the new location on September 9, 2025.

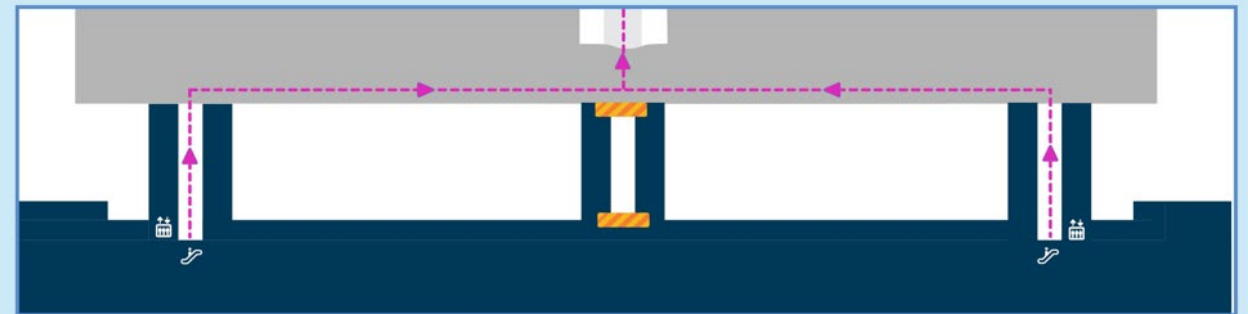


## ARRIVALS LEVEL



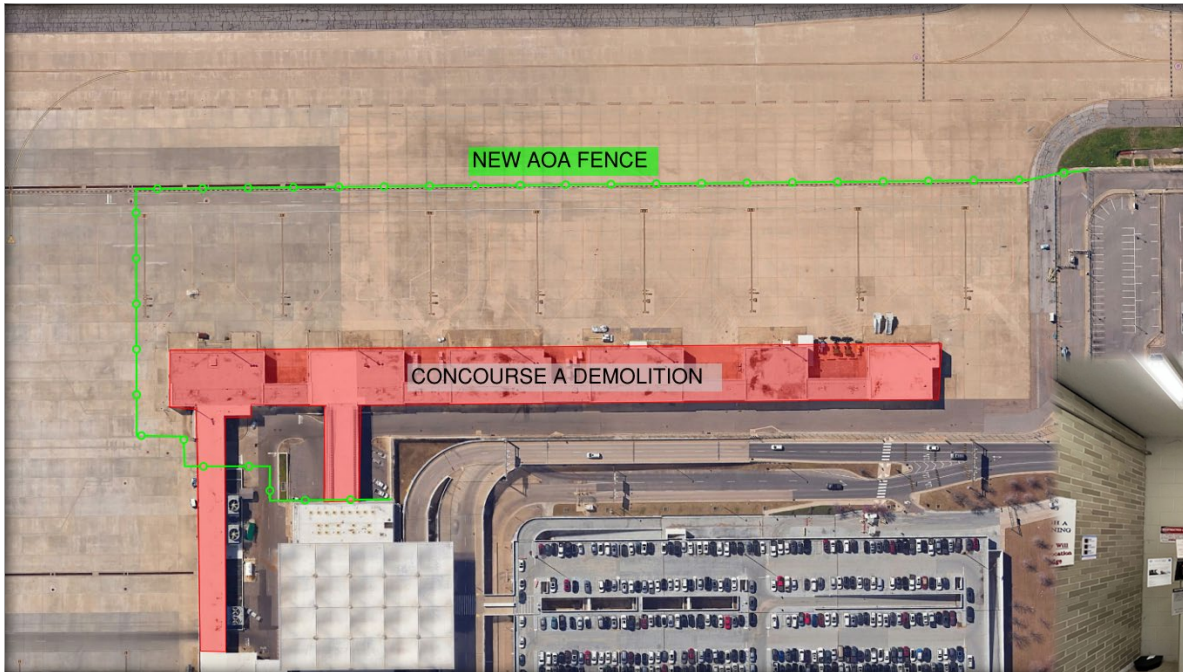
--- DETOUR ROUTE

## TUNNEL LEVEL



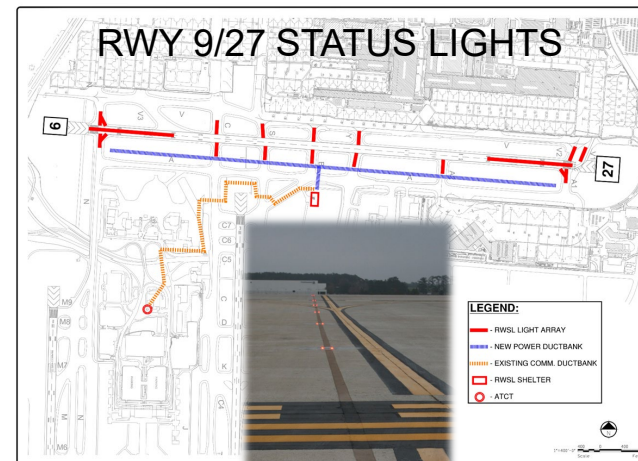
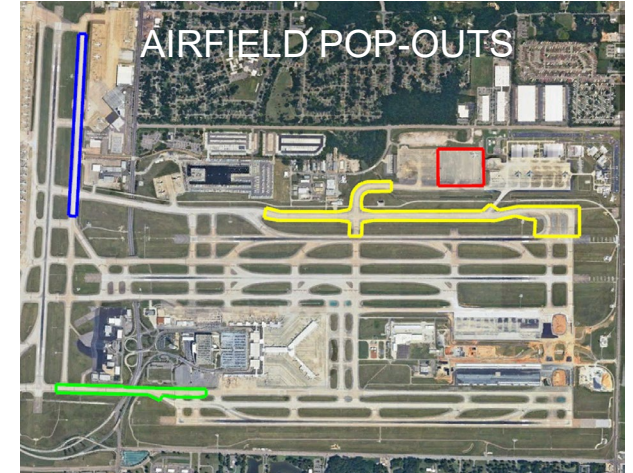
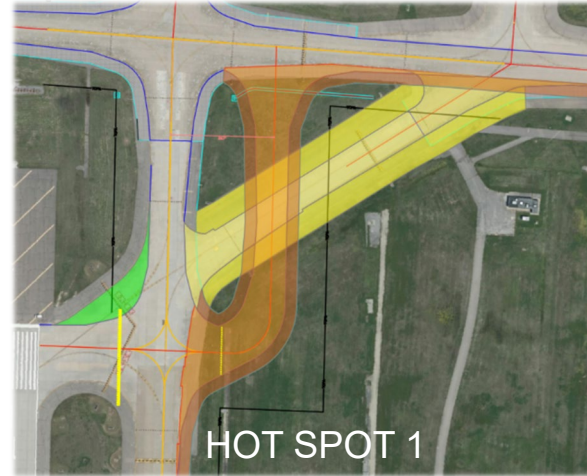
# TMSP – Concourse A Demolition

- New AOA/Perimeter Fence completed
- Demolition work started July 8<sup>th</sup>.
- Project will make way for new Administration Building and future CONRAC Facility
- ❖ **IMPACTS:**
  - **RON Gates R09 to R16 Permanently Closed on 1/13/25**
  - **West Turnstile Closed on 5/5/25**
  - **Increased construction traffic on around the Concourse Vehicle Service Road**



# Ongoing MEM Airside Projects

- **Taxiway Bravo/Hot Spot 1**
  - Pre-Construction Activities
  - Construction Start: Early 2026
  - Project Completion: Late 2026
- **Runway 9/27 Status Lights**
  - Bids Due: 2/26/26
  - Construction Start: Mid 2026
  - Project Completion: Late 2026/Early 2026
- **Airfield Popouts (Taxiway Yankee)**
  - Finalizing Design & Phasing
  - Construction Start: 2027/2028
  - Working with FAA on timing
- **Snow Removal Equipment (SRE) Storage Building**
  - Multi-Phase Project
  - Phase 1 is a Site Preparation Package
    - Advertised 2/17/26
    - Summer 2026 Construction
  - Phase 2 is for the Storage Building (1<sup>st</sup> Phase)
    - Summer 2026 Bidding
    - Late 2026/Early 2027 Construction



# Ongoing MEM Landside Projects

- **Parking Information Signage**
  - Design complete December 2025
  - Construction Early 2026
- **Parking Guidance System (Economy & Short/Long Term Garages)**
  - Project Underway
  - Approx. 12-Month Construction Duration
  - Will require coordinated closures of parking areas within the garages
- **Rotunda Trash Chutes**
  - Construction Underway
  - Completion Delayed: Now Late February 2026
  - Training and Activation March 2026
- **CONRAC Facility/Garage**
  - Programming/Preliminary Design Underway
  - Final Design & Construction Timing TBD

CONRAC



Memphis INTERNATIONAL AIRPORT	
Airport Parking Information	
Economy	Open
Short Term/Hourly	Open
Premium	Open
Blue Lot/Oversize	Full
Yellow Lot	Closed
Future Lot	

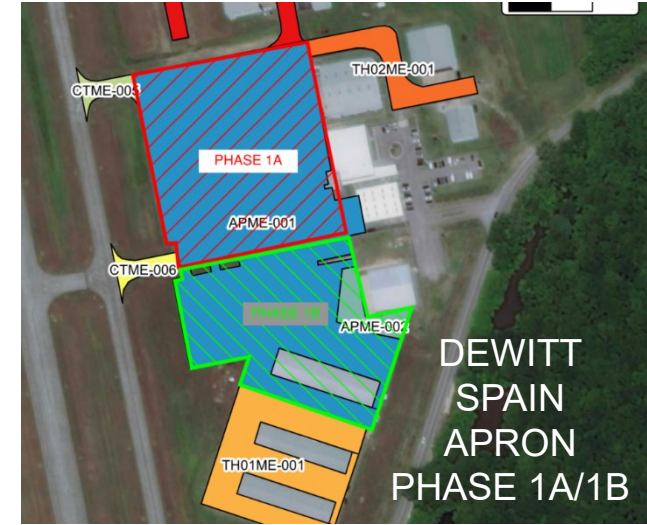
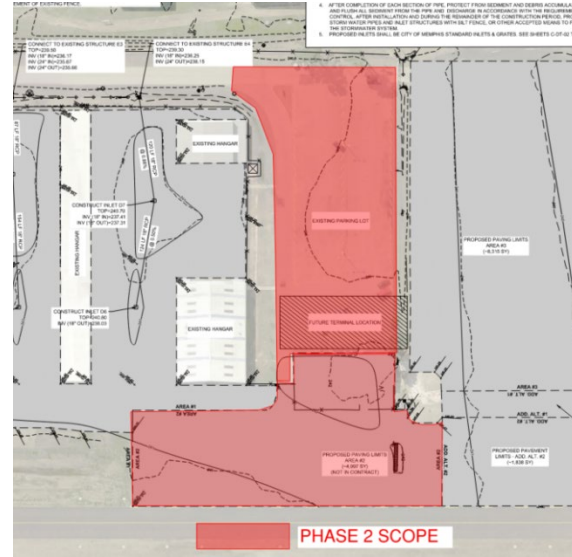
PARKING INFORMATION SIGNAGE



# Ongoing GA Projects

- **Charles Baker Airport Terminal**
  - 88% Complete.
  - Project completion expected Spring 2026
- **Charles Baker Airport Pavement Rehabilitation – Phase 2**
  - Under Design
  - Includes pavement rehabilitation of:
    - Apron around the fuel farm
    - Terminal parking lot
  - Construction: Early 2026 Bidding / Mid 2026 Construction
- **DeWitt Spain Airport Apron Rehabilitation – Phase 1B**
  - 95% Complete / Punchlist Efforts

BAKER APRON PHASE 2



# Winter Operations

---







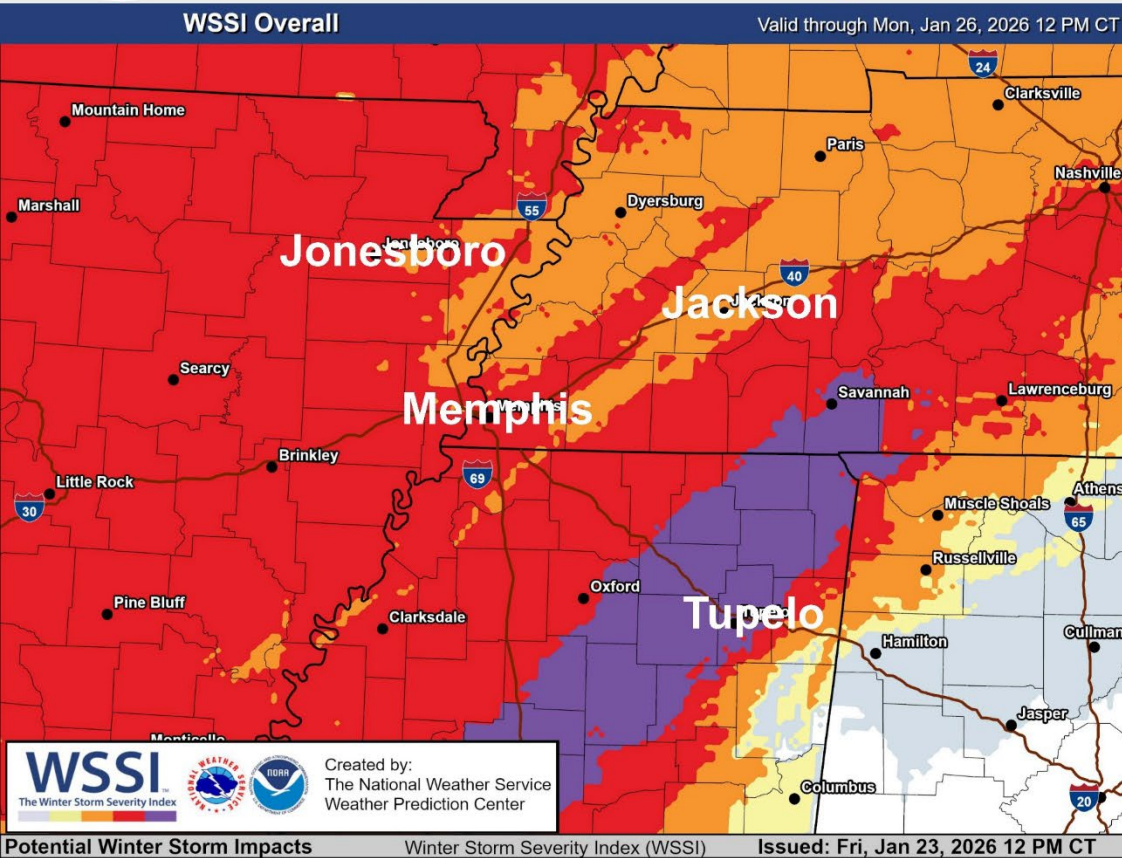
- **Bottom Line Up Front:** An **impactful, potentially historic, Winter Storm** will impact the Mid-South this weekend with ice, sleet, and snow. Significant disruptions to travel and infrastructure are expected, with the potential for weather-related power outages in areas that see significant ice accumulation.
- A Winter Storm Warning and Ice Storm Warning are in effect from **6 PM Friday (today) through 6 PM Sunday.**
- **Prolonged sub-freezing temperatures** (72+ hrs) and dangerously cold (sub-zero to single digit at times) wind chills will prevail from tonight through at least the middle of next week. Subfreezing temperatures may extend through the end of next week for a large portion of the area.



# Winter Storm Severity Index

January 23, 2026  
2:00 PM CST

## Overall - Snow & Ice Impacts



### TIMING OF IMPACTS



Late tonight through Sunday Afternoon

### POTENTIAL IMPACTS



Heavy accumulating snow, sleet, and/or ice on the roads will create hazardous travel conditions

Sub-freezing temperatures will likely damage pipes and cause frostbite/hypothermia

Weather-related power outages, especially in areas impacted by ice, are expected

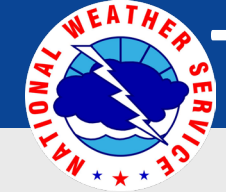
### WHAT TO DO



Avoid travel

Continue to monitor forecast for travel adjustments if necessary



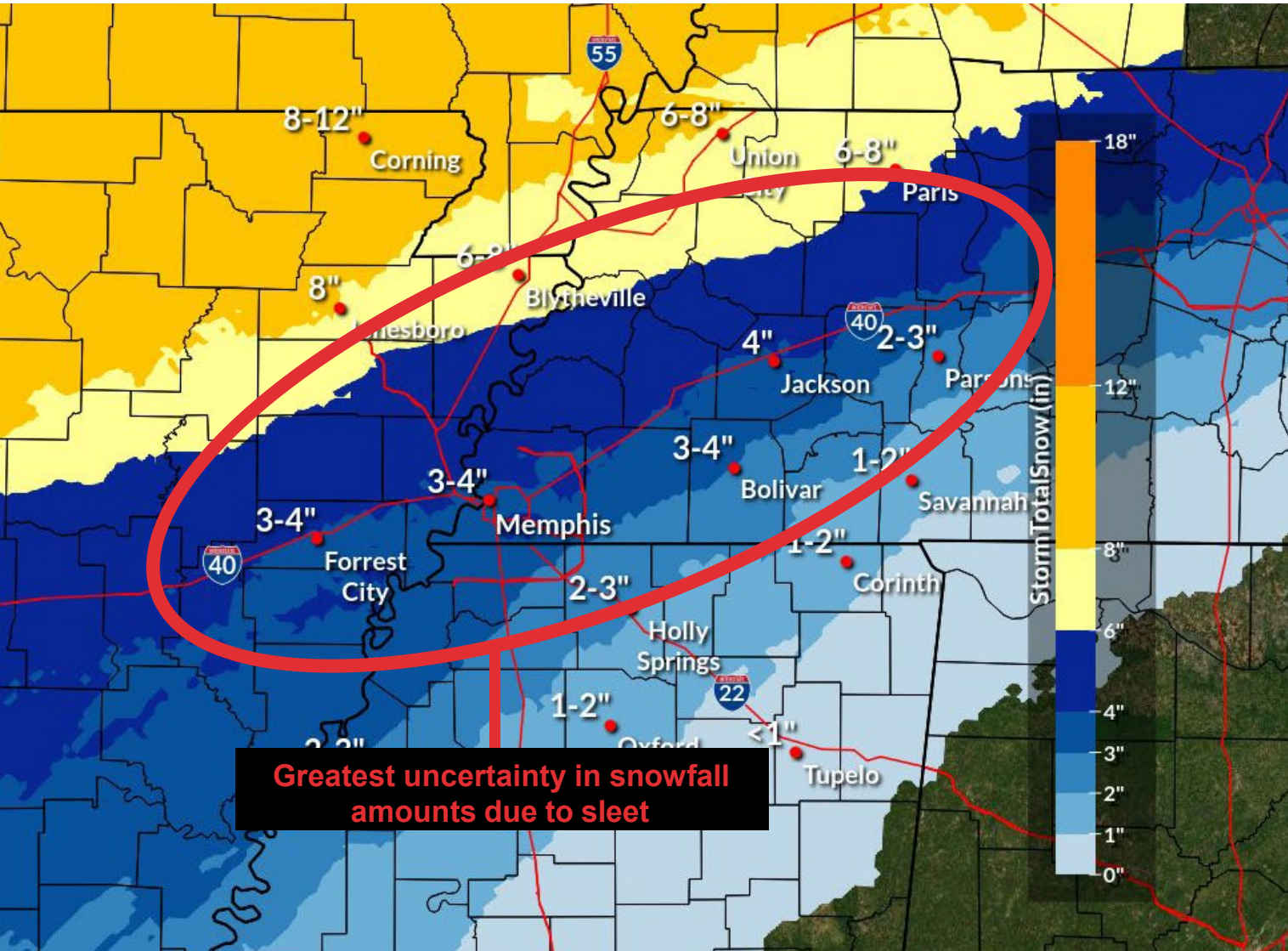


# Total Snowfall / Sleet Forecast

January 23, 2026

2:00 PM CST

Through 6 AM Monday



- Heaviest snow bands will occur on Saturday.
- There will be a sharp gradient in high snowfall amounts (> 4") versus lower amounts of mostly sleet.



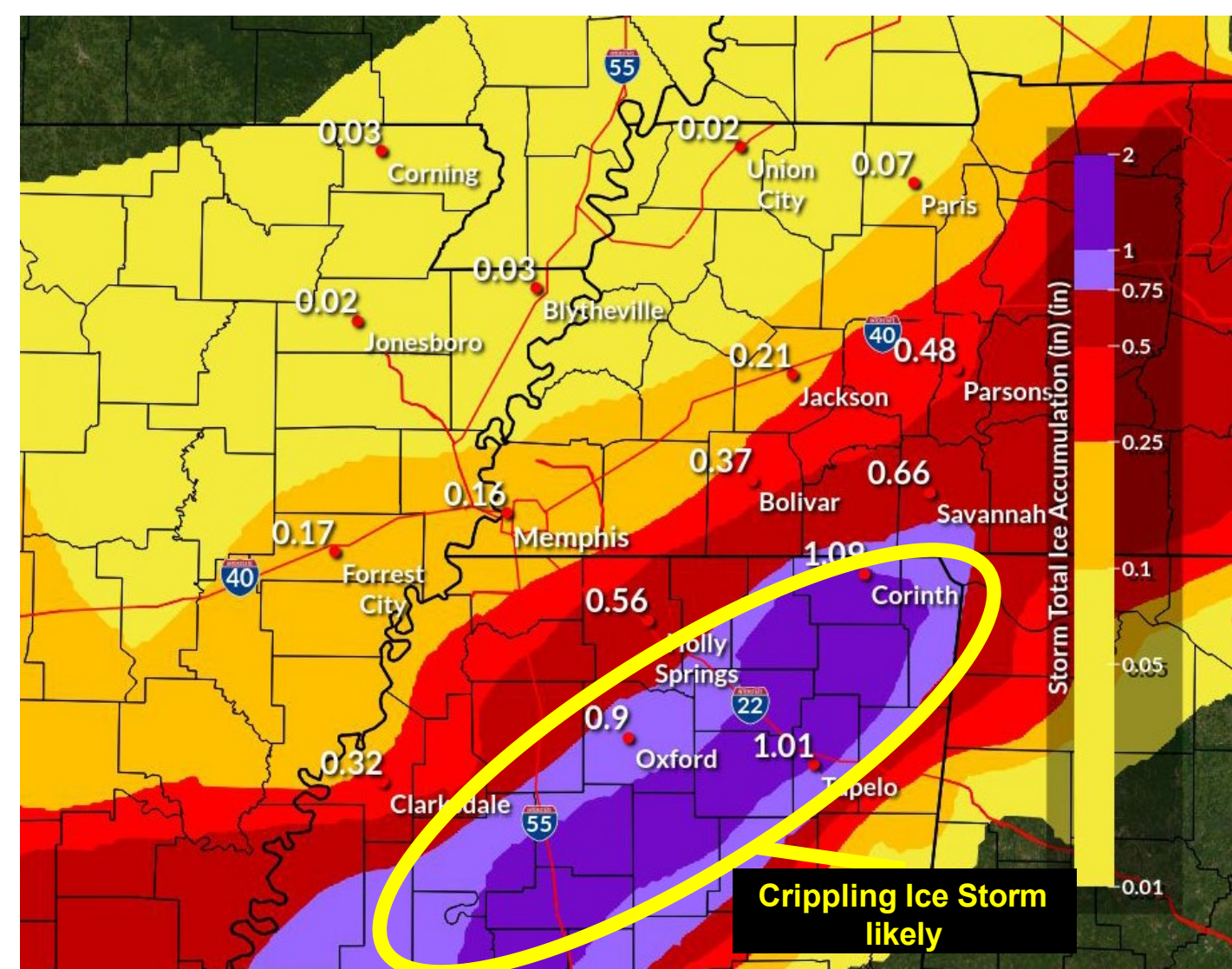


# Total Ice Forecast

January 23, 2026

2:00 PM CST

Through 6 AM Monday



- There will be a sharp gradient in high ice accumulation ( $> 0.25''$ ) versus lesser amounts due to sleet.
- Far SE corner of the Mid-South could see periods of rain instead of freezing rain depending on surface temperatures.

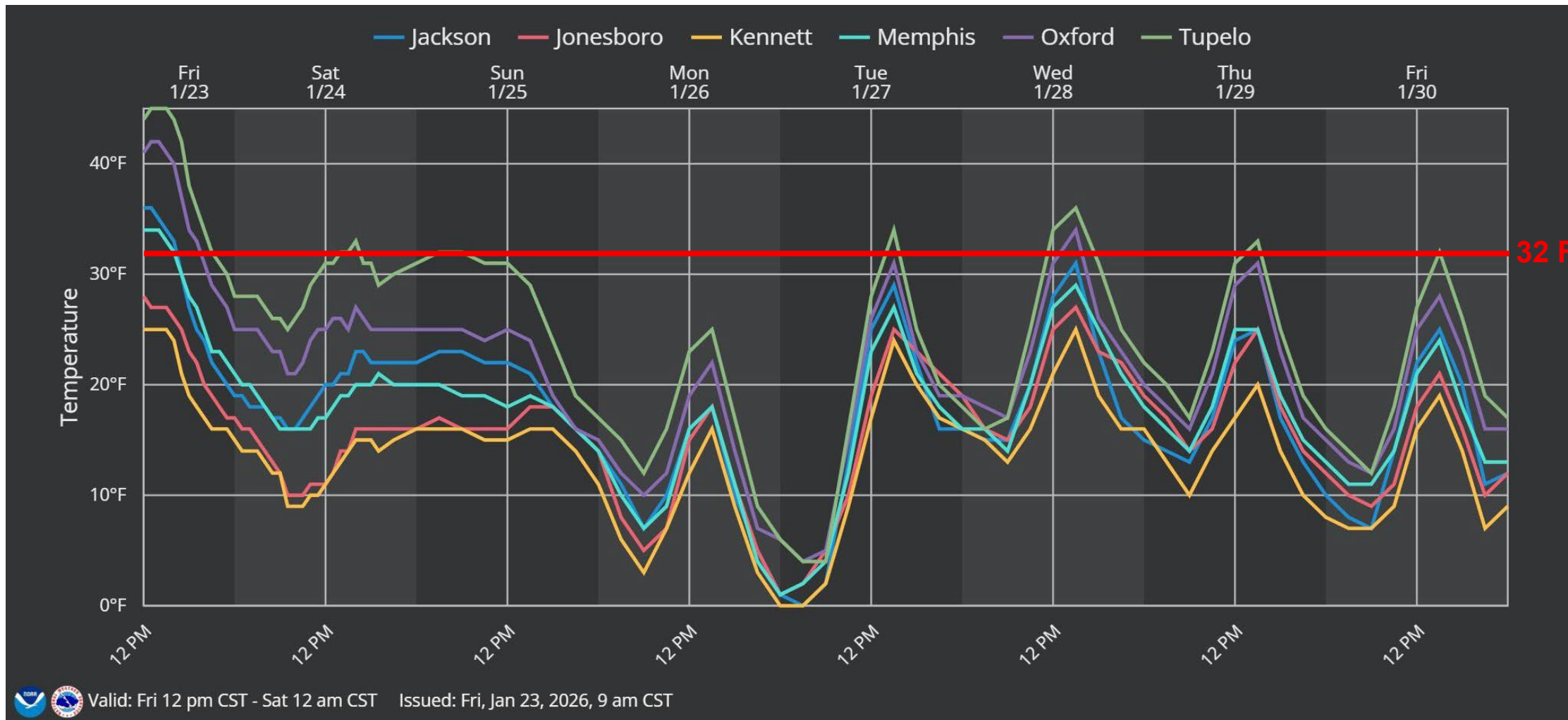




# Forecast Temperatures

January 23, 2026  
2:00 PM CST

Today through next Friday



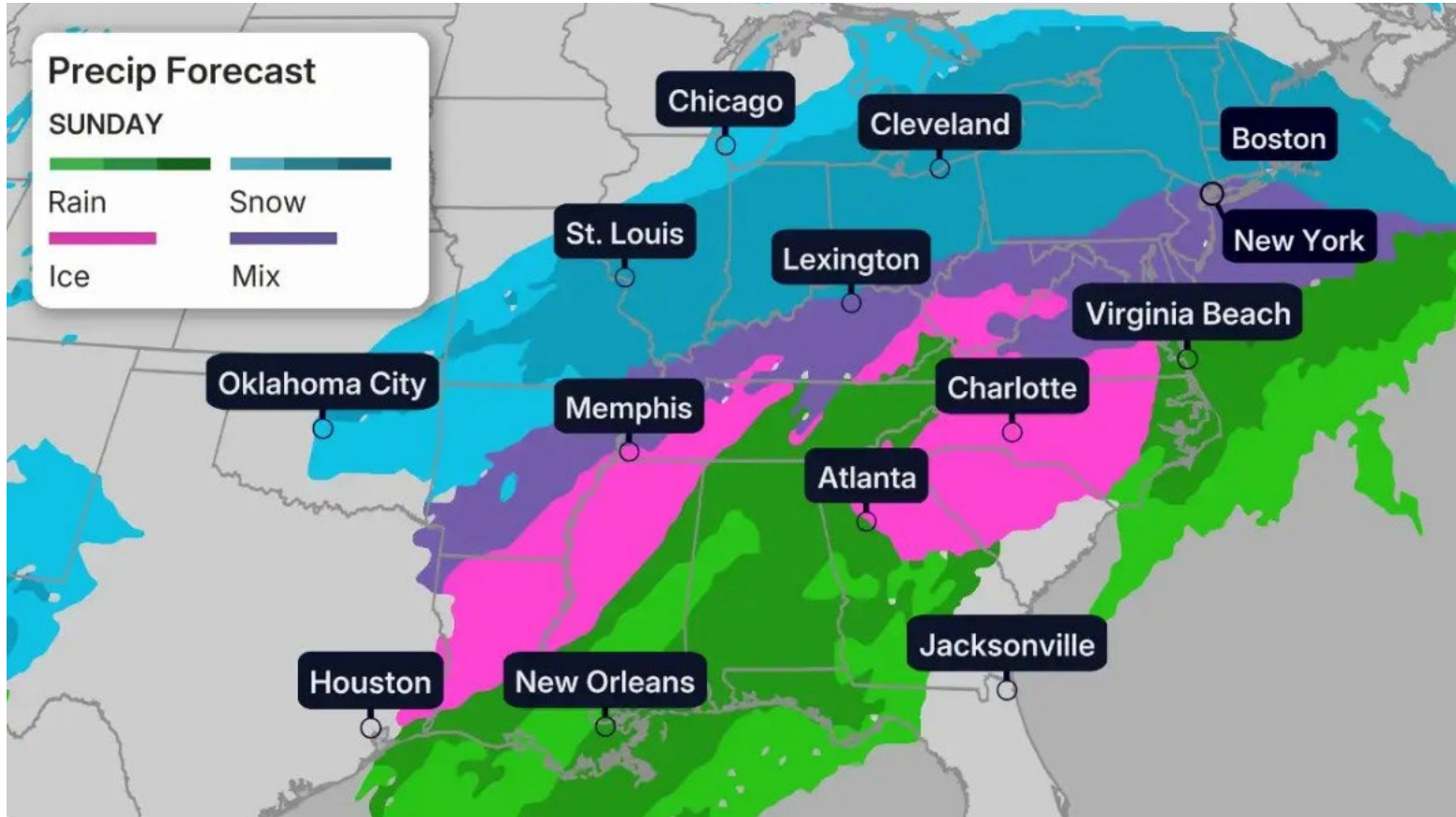
Temperatures will quickly fall below freezing tonight and will remain there through at least the middle of next week.

# Airline Forecast

- \* Precip Start: 24/07z
- \* Precip End: 25/23z
- \* Precip Type(s): Snow, freezing rain, ice pellets
- \* Accumulation: Snow 2-3", Freezing rain 0.40"-0.80", Ice Pellets 2" - 4"

Snow will begin after midnight with ice pellets mixing in late. Ice pellets, moderate at times, will continue Saturday, mixing with freezing rain late. A brief lull is possible early Saturday night before a mix of ice pellets and freezing rain resumes late Saturday night into Sunday. Moderate to briefly heavy freezing rain or ice pellets is possible Sunday morning. Snow flurries will briefly fall before the event ends late Sunday afternoon. Temps will hover near 20F throughout the event. Expect NNE winds at 15 mph switching NNW Sunday afternoon with some higher gusts dropping wind chills into the single digits at times.

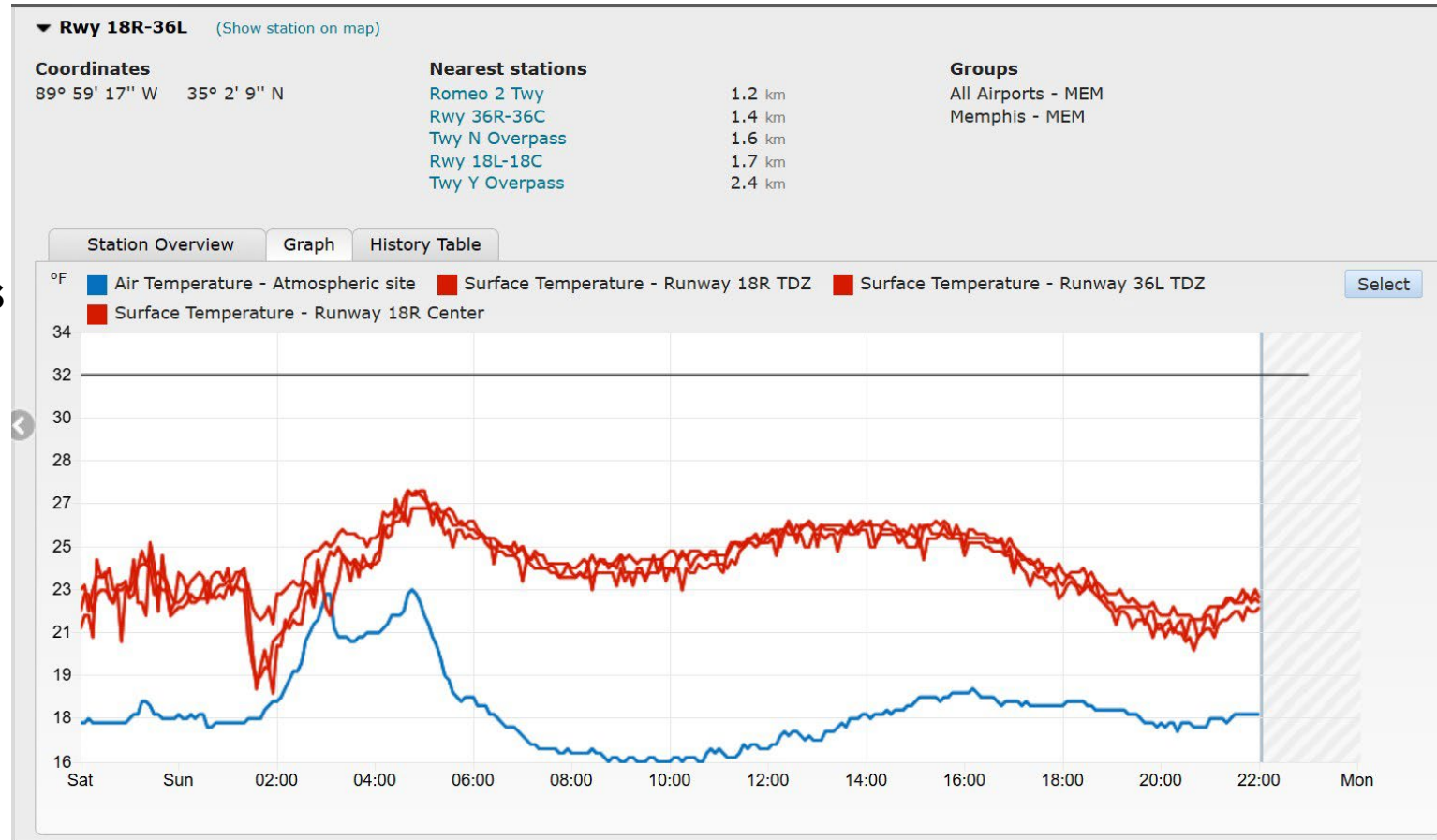
# Widespread Impact



Source: The Weather Channel

# Tools and Preparation

- Weather Forecasts
- Pavement Temperatures
- Flight Status and Airfield Conditions
- Pretreatment
- Staff Planning and Support
- Snow Command



# Tools and Preparation

- Weather Forecasts
- Pavement Temperatures
- Flight Status and Airfield Conditions
- Pretreatment
- Staff Planning and Support
- Snow Command

**MEM**  
MEMPHIS INTL

▲ Snow Removal In Progress

**Runways**

<input type="checkbox"/> RWY 09 RVR U/S (Not Active)	02/231 Issued@02/13/2026 2113	02/16/2026 1400 - 02/16/2026 2000
<input type="checkbox"/> RWY 18R RVR U/S (Not Active)	02/233 Issued@02/13/2026 2113	02/16/2026 1400 - 02/16/2026 2000
<input type="checkbox"/> RWY 27 RVR U/S (Not Active)	02/232 Issued@02/13/2026 2113	02/16/2026 1400 - 02/16/2026 2000
<input type="checkbox"/> RWY 36L RVR U/S (Not Active)	02/234 Issued@02/13/2026 2113	02/16/2026 1400 - 02/16/2026 2000
<input type="checkbox"/> RWY 36L PAPI U/S	02/229 Issued@02/13/2026 1323	02/13/2026 1323 - 02/27/2026 2000
<input type="checkbox"/> RWY 18R RAI LGT U/S	12/160 Issued@12/13/2025 0731	12/13/2025 0731 - 05/29/2026 2000

**Taxiways, Aprons & Ramps**

<input checked="" type="checkbox"/> TWY V BTN TWY S AND TWY Y, TWY Y BTN RWY 09/27 AND TWY V, TWY B BTN RWY 09/27 AND TWY V CLSD (Not Active)	02/236 Issued@02/13/2026 2134	02/16/2026 1300 - 02/16/2026 2330
---	-------------------------------	-----------------------------------

27°F S (180°) 5 MPH

2026-01-28T22:20:47 05:00

26°F Clear 1/28/2026 10:20 PM

# Tools and Preparation

- Weather Forecasts
- Pavement Temperatures
- Flight Status and Airfield Conditions
- Pretreatment
- Staff Planning and Support
- Snow Command



# Tools and Preparation

- **Weather Forecasts**
- **Pavement Temperatures**
- **Flight Status and Airfield Conditions**
- **Pretreatment**
- **Staff Planning and Support**
- **Snow Command**
- 12-hour Shifts
- CDF Staffing
- Overnight accommodation on airport
- Onsite meals and snacks
- Terminal and landside support
- Logistics
- Restroom Trailers

# Tools and Preparation

- Weather Forecasts
- Pavement Temperatures
- Flight Status and Airfield Conditions
- Pretreatment
- Staff Planning and Support
- Snow Command



# Active Winter Operations



# Active Winter Operations



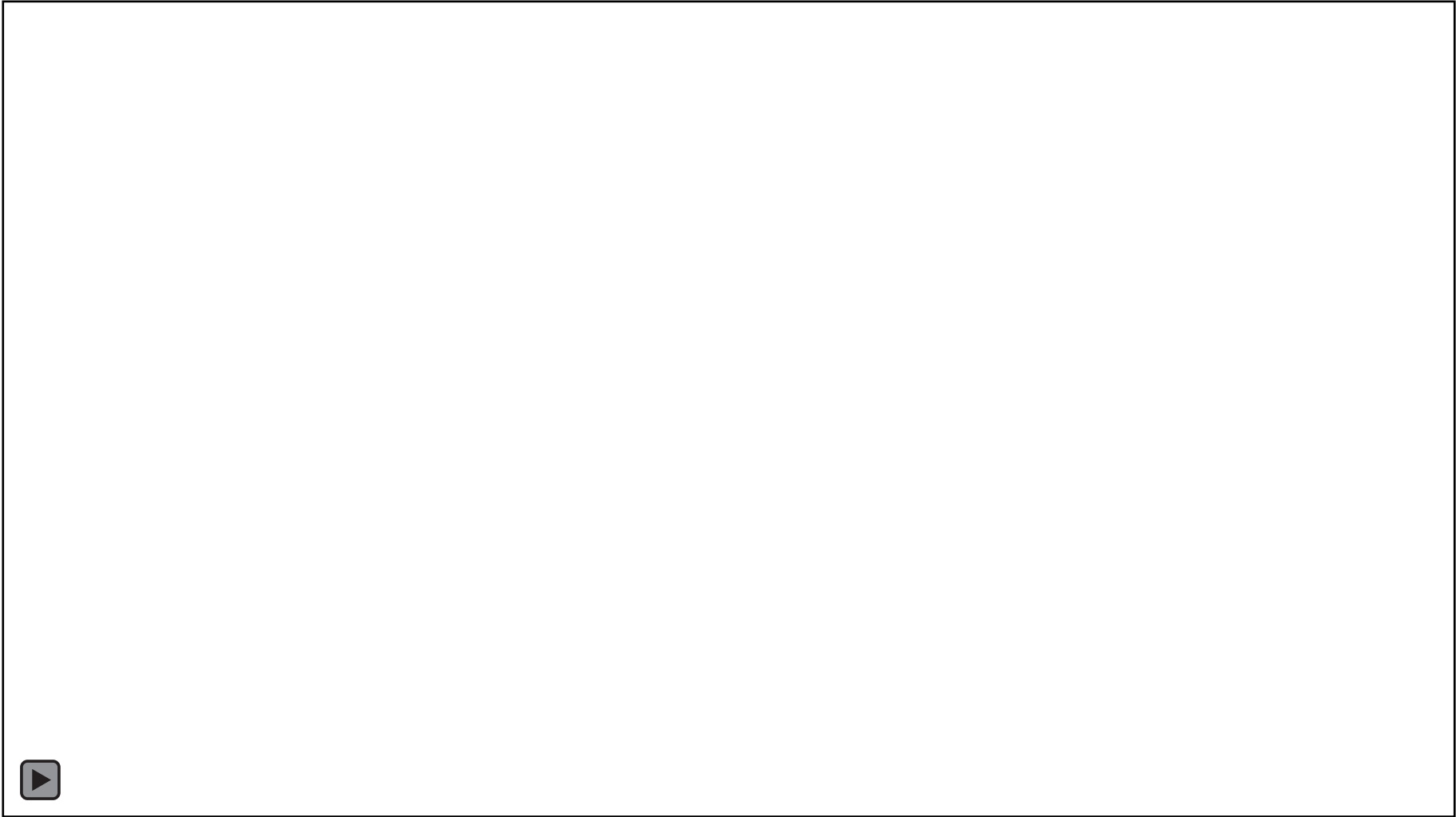
# Active Winter Operations



# Active Winter Operations – Aircraft Deiced

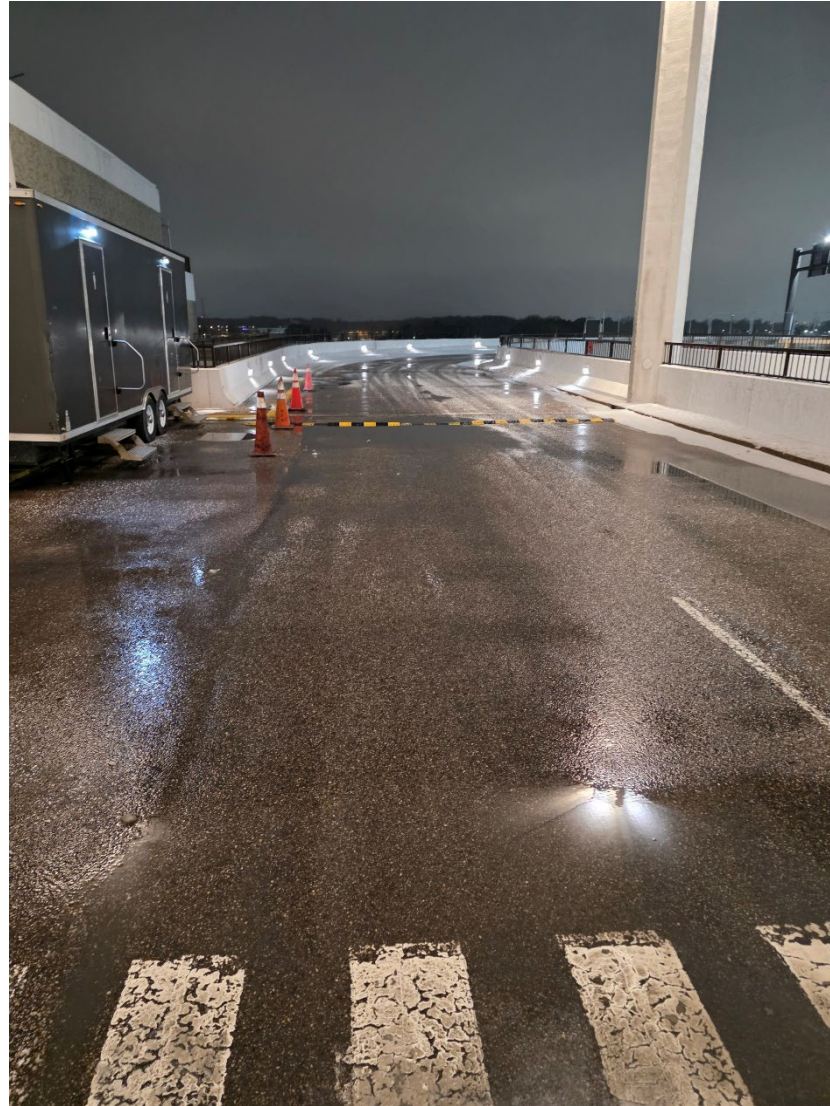
Date	Time Range	Total Ops	FedEx	Delta	American	United	Southwest	General Aviation
01/23	1600–2359	0	0	0	0	0	0	0
01/24	0000–2359	12	12	0	0	0	0	0
01/25	0000–2359	3	0	2	1	0	0	0
01/26	0000–2359	6	3	3	0	0	0	0
01/27	0000–2359	28	11	7	3	3	2	2
01/28	0000–2359	61	41	5	6	3	4	2
01/29	0000–1630	21	11	0	5	2	3	0

# Active Winter Operations



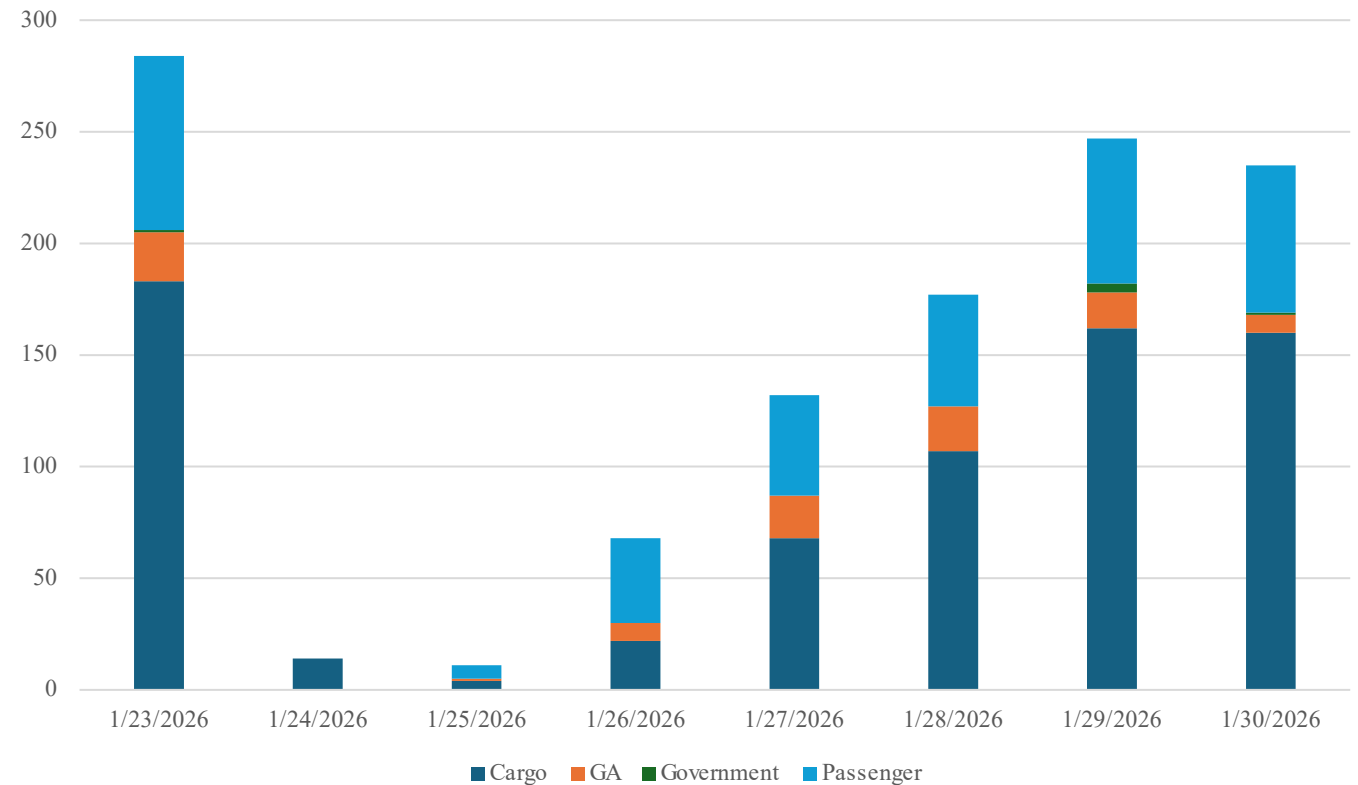
# Lessons and Opportunities

- Surrounding Roads
- Air Traffic Activity
- Weather
- Resupply
- Terminal Operations
- Contractor Support
- Equipment



# Lessons and Opportunities

- Surrounding Roads
- Air Traffic Activity
- Weather
- Resupply
- Terminal Operations
- Contractor Support
- Equipment



# Lessons and Opportunities

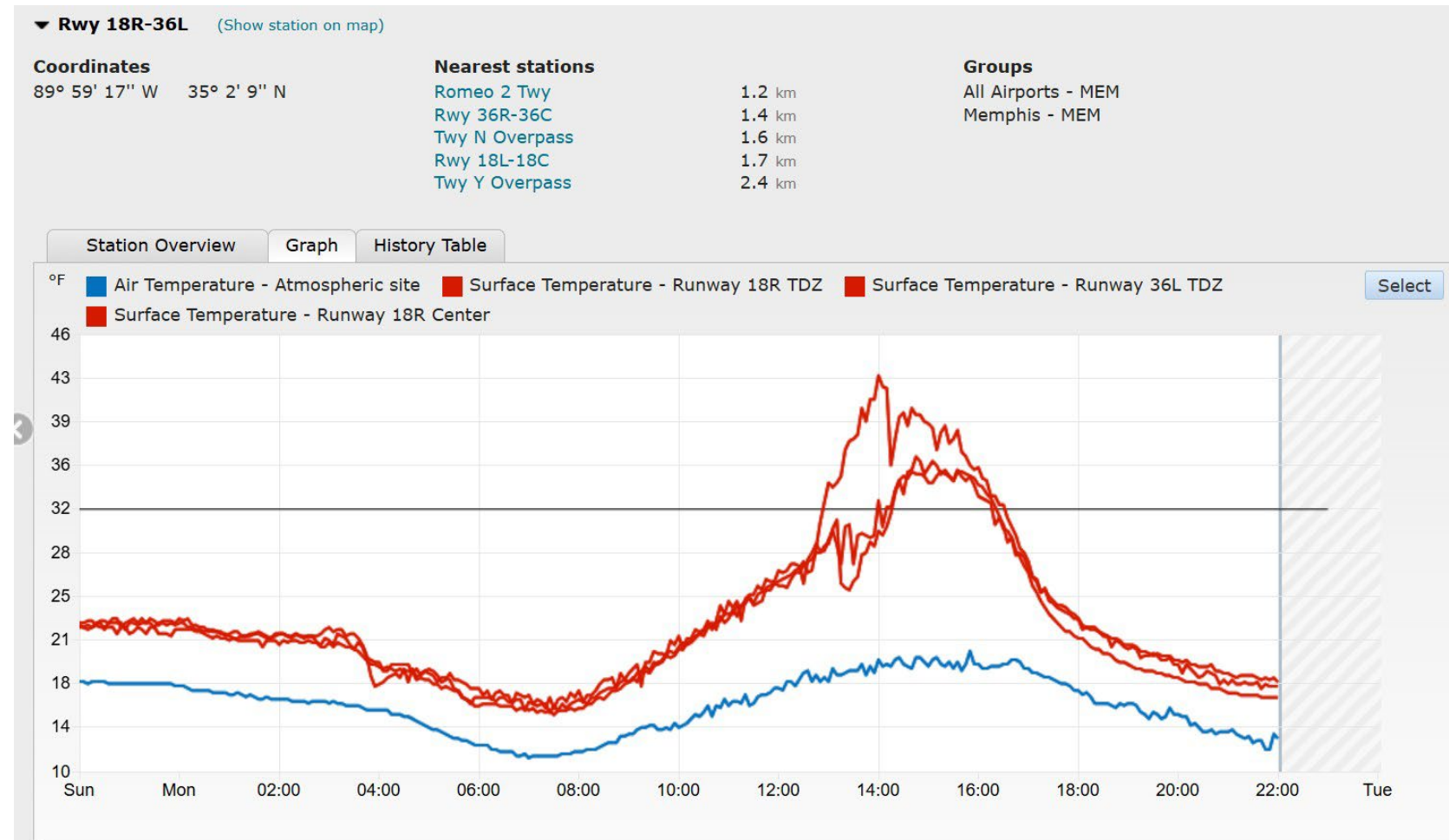
- Surrounding Roads
- [Air Traffic Activity](#)
- Weather
- Resupply
- Terminal Operations
- Contractor Support
- Equipment

All told, the storm — dubbed "Fern" by The Weather Channel — has led to some 20,000 scuttled departures since Saturday, per FlightAware.

Source: The Points Guy Website, 1/26/26

# Lessons and Opportunities

- Surrounding Roads
- Air Traffic Activity
- Weather
- Resupply
- Terminal Operations
- Contractor Support
- Equipment



# Lessons and Opportunities

- Surrounding Roads
- Air Traffic Activity
- Weather
- Resupply
- Terminal Operations
- Contractor Support
- Equipment

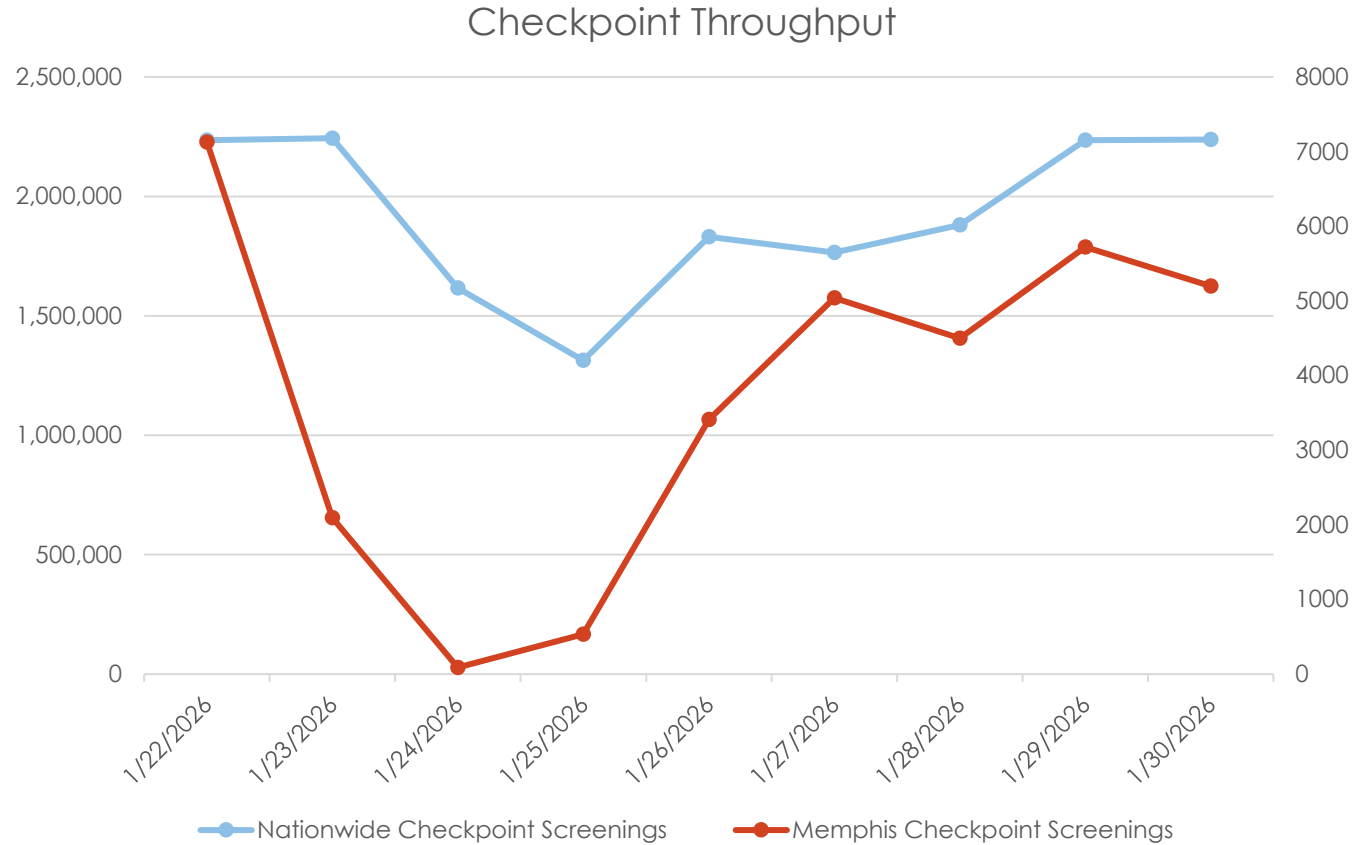
# Lessons and Opportunities

- Surrounding Roads
- Air Traffic Activity
- Weather
- Resupply
- Terminal Operations
- Contractor Support
- Equipment



# Lessons and Opportunities

- Surrounding Roads
- Air Traffic Activity
- Weather
- Resupply
- Terminal Operations
- Contractor Support
- Equipment



# Lessons and Opportunities

- Surrounding Roads
- Air Traffic Activity
- Weather
- Resupply
- Terminal Operations
- Contractor Support
- Equipment



# Lessons and Opportunities

- Surrounding Roads
- Air Traffic Activity
- Weather
- Resupply
- Terminal Operations
- Contractor Support
- **Equipment**





**TAKE OFF WITH US**



**Memphis**  
INTERNATIONAL AIRPORT