



TAKE OFF WITH US

Memphis

INTERNATIONAL AIRPORT

Operations Report

January 22, 2026

Winter Operations



Snow/Sleet/Ice Friday Afternoon through Sunday Afternoon



What We Know

- A potentially historic Winter Storm is forecast to bring wintry precipitation starting Friday afternoon.



What We Don't Know

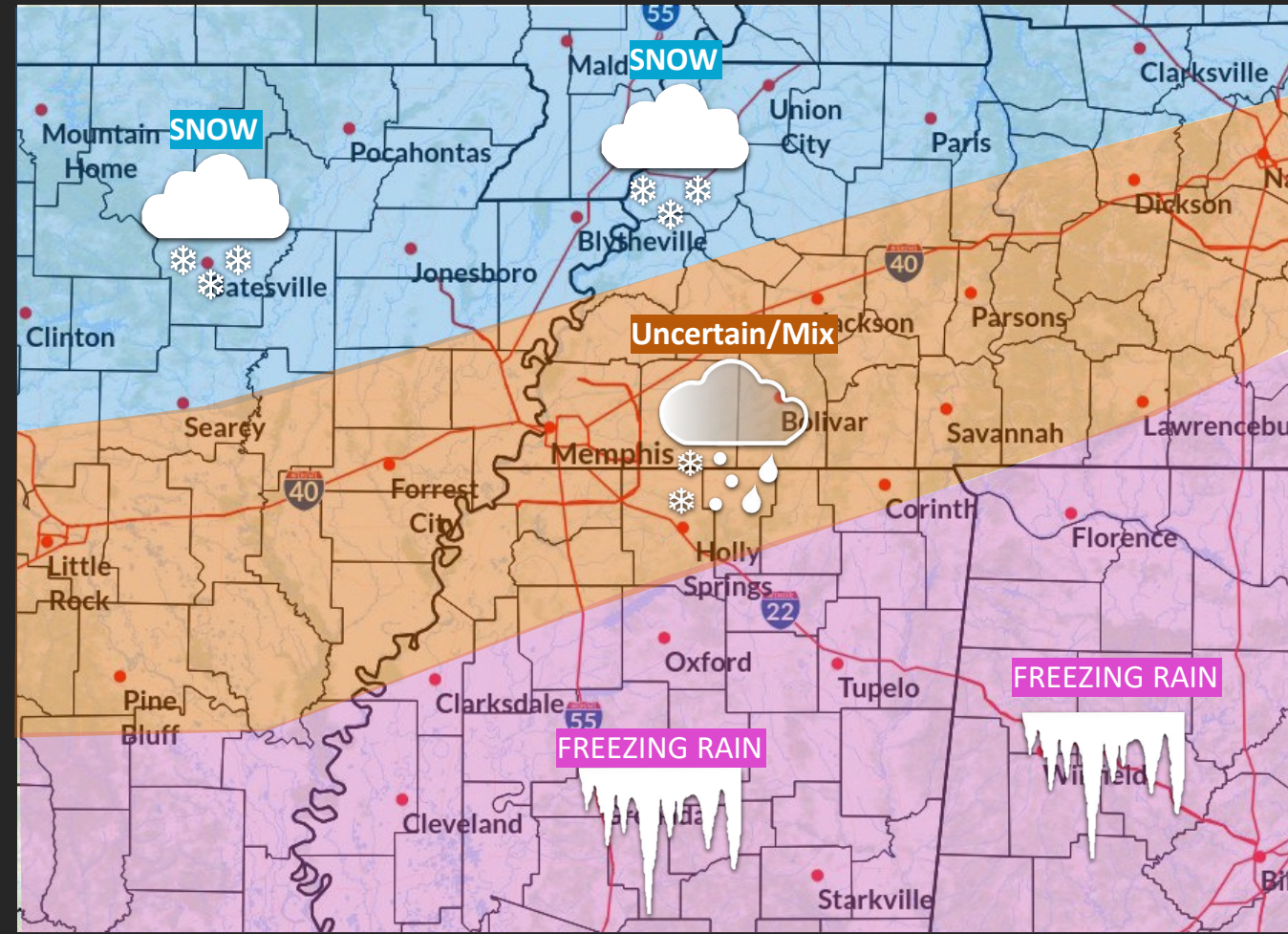
- Exactly where the transition from snow/sleet to freezing rain will occur.
- How much snow/ice/sleet accumulation can be expected.



What You Can Do Now

- Prepare for hazardous travel conditions as early as midday Friday and **continue to monitor the latest forecast**.

Most Likely Scenario



National Weather Service Memphis, TN

Follow:   @NWSMemphis

weather.gov/memphis

Updated: Thu Jan 22, 2026 6:00 AM



Timeline of Impacts - All Hazards

January 22, 2026
6:00 AM CST

Through the Entire Event - Majority of Winter Weather is Expected on Saturday

	Friday	Saturday	Sunday	Monday	Tuesday	Wednesday
Missouri Bootheel	Snow Starts Late Evening	Heavy Snow	Snow Ending	Bitter Cold Linging Snow	Bitter Cold Linging Snow	Bitter Cold Linging Snow
Northeast Arkansas	Snow Starts Evening	Heavy Snow	Snow Ending	Bitter Cold Linging Snow	Bitter Cold Linging Snow	Bitter Cold Linging Snow
West Tennessee	Wintry Mix Starts Evening	Heavy Snow / Sleet / Ice	Wintry Mix Ending	Bitter Cold with Linging Snow / Sleet / Ice	Bitter Cold Linging Snow / Sleet / Ice	Bitter Cold Linging Snow / Sleet / Ice
North Mississippi	Wintry Mix Starts Late Afternoon / Evening	Sleet / Ice	Wintry Mix Ending	Bitter Cold with Linging Sleet / Ice	Bitter Cold Linging Sleet / Ice	Bitter Cold Linging Sleet / Ice

Risk levels incorporate potential impacts from weather hazards and likelihood of occurrence.

Risk Levels	Little to None	Minor	Moderate	Major	Extreme
-------------	----------------	-------	----------	-------	---------

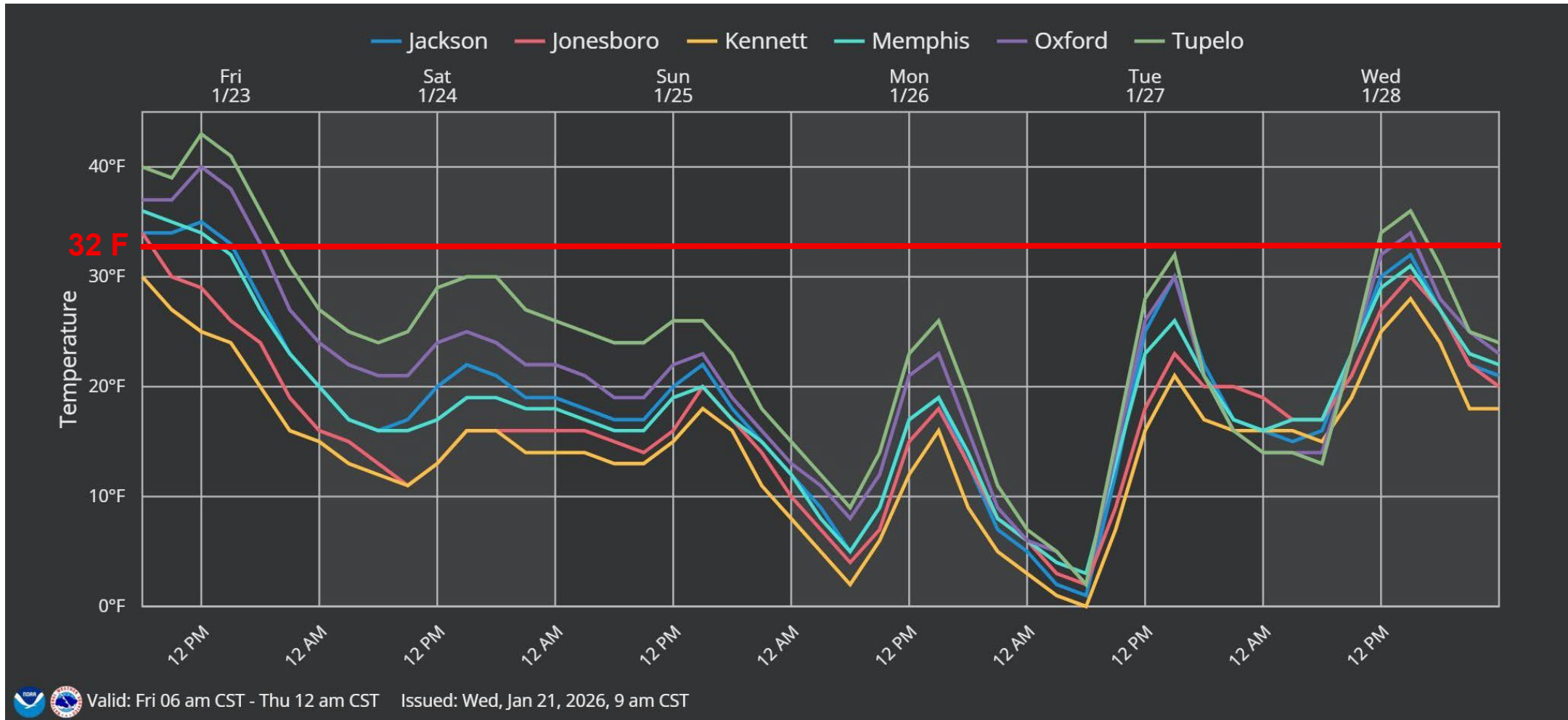


Forecast Maximum Temperatures

January 21, 2026

11:00 AM CST

Friday through Wednesday



Temperatures will quickly fall below freezing on Friday and will remain there through at least the middle of next week.

TSA Activity Recap



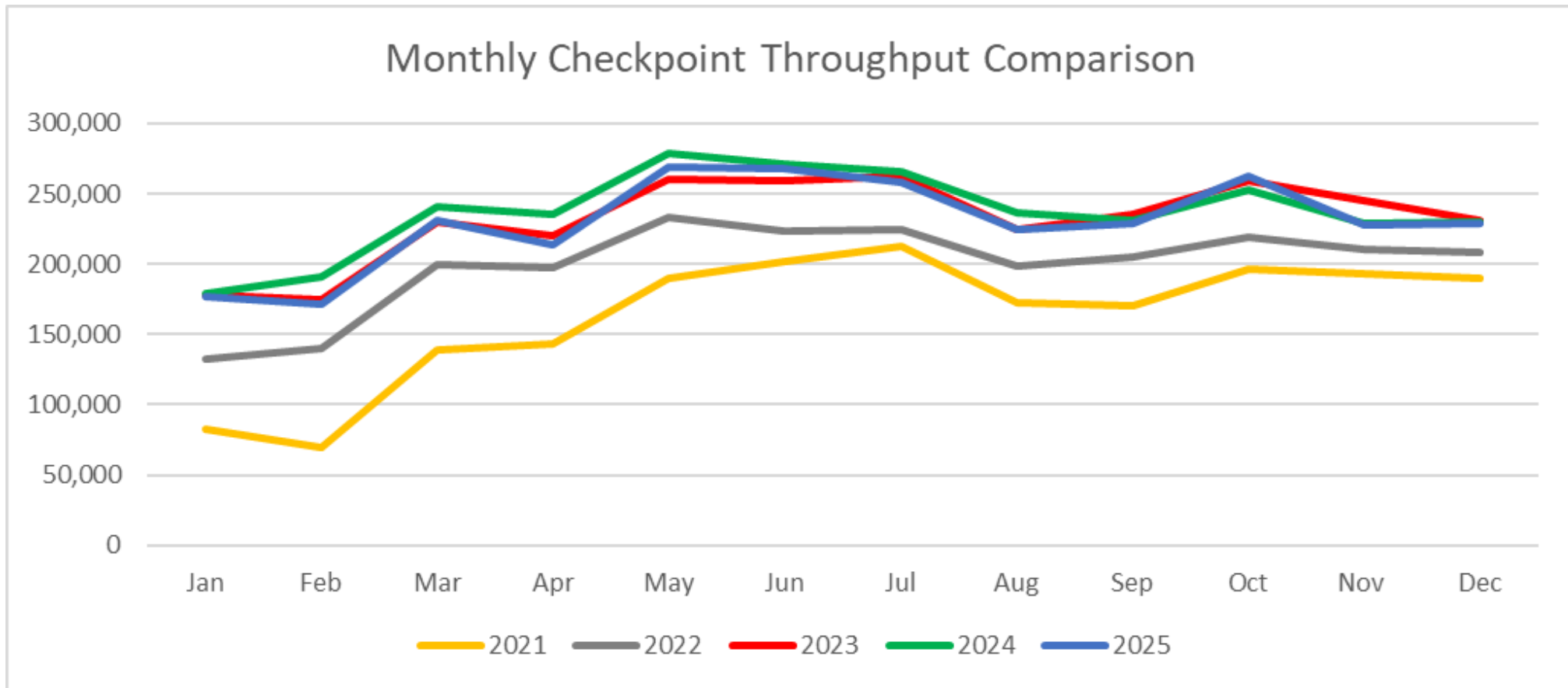


Monthly and Annual Summaries

Total Throughputs –

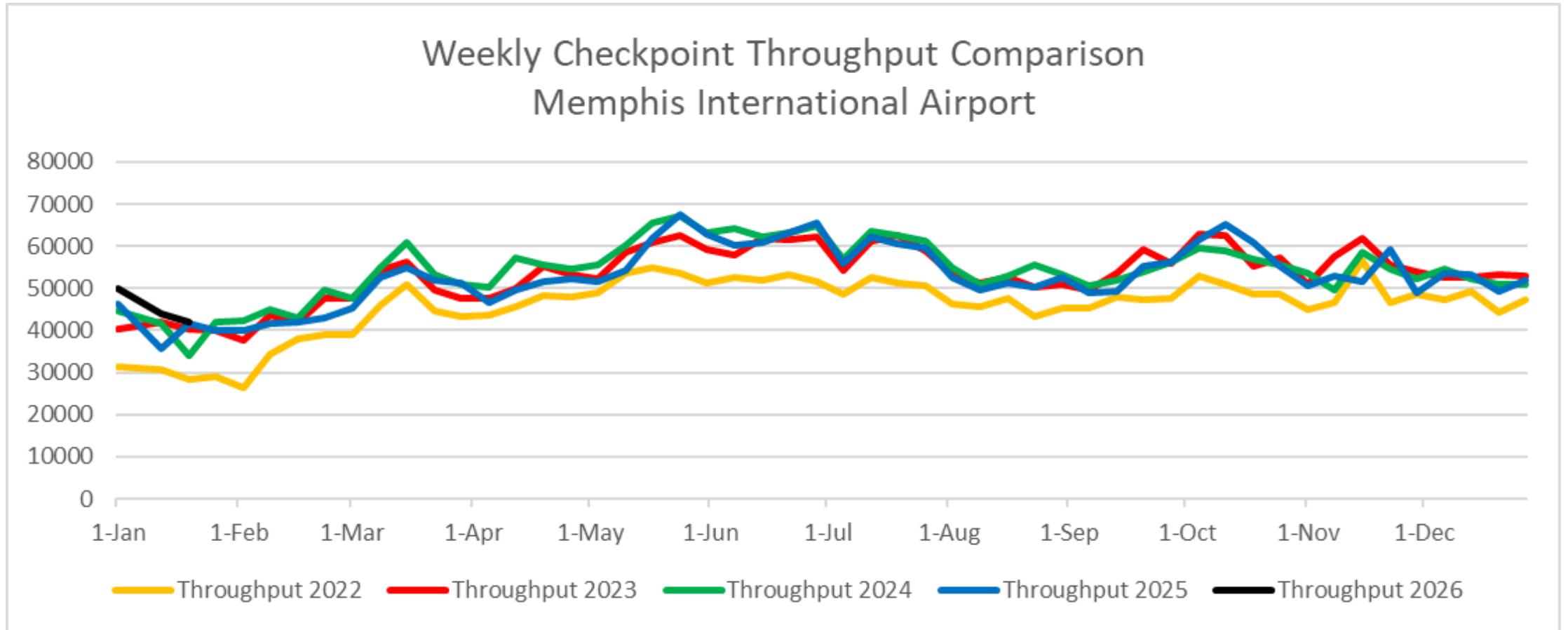
December 2025: 228,820; -0.5% compared to 2024

Calendar Year 2025: 2,761,509; -2.8% compared to 2024





MEM Weekly Checkpoint Throughput Comparison



Busiest January start since at least 2008. Throughput for the first 20 days of January is 7% ahead of same period in 2025 (with no winter weather events).



TSA Confirm ID Rollout

Effective: February 1, 2026

Target Audience:

- Travelers not presenting an acceptable form of ID
- Travelers not presenting a REAL ID compliant form of ID

Process:

- Travelers who are unable to present an acceptable form of ID (including those who present a non-REAL ID compliant DL/ID) will be referred to TSA Confirm ID and will be required to pay a fee of \$45. (Valid for 10 days.)
- Online payment of this fee allows the passenger to start the ID verification and screening process.
- Verification and screening must be successfully completed before being allowed into the sterile area.
- Payment does not guarantee entry into the sterile area.

Impact in MEM

- Approximately 99% of Pre-Check passengers and 96% of all passengers present a REAL ID compliant form of ID at the checkpoint.
- On slow travel days, this equates to approximately 200 passengers having to complete the TSA Confirm ID process. On busy days this equates to approximately 400 passengers.



TSA ConfirmID Operations Plan at MEM

Initial Contact with Passengers:

- To prevent checkpoint congestion, the goal is to interact with target passengers at the airline ticket counters, in the ticket lobby or in the checkpoint queue BEFORE they arrive at the TSA Travel Document Check (TDC) position.
- Target passengers without Pay.gov receipts will be directed to the ConfirmID Assistance Area.
- Target passengers with Pay.gov receipts will be directed to the TSA checkpoint queue.

ConfirmID Assistance Area:

- In the B Lobby (west side) adjacent to the gift shop.
- Staffed by MSCAA and TSA personnel.
- Will provide information on how to get on airport Wi-Fi Hotspot (if necessary) and complete the online Pay.gov process.
- Once the Pay.gov process is complete, passengers will be directed to the TSA checkpoint queue.

TSA Checkpoint Procedures:

- At the end of the checkpoint queuing process, the TSA TDC will verify the Pay.gov receipts.
- Passengers will present the ID that they have available (including ID that is not REAL ID compliant).
- Based on the ID presented, the TSA TDC will then direct the passengers to the appropriate level of follow-on screening. This may include additional identification verification procedures.

Don't Have an Acceptable Form of Identification?



Scan the QR code to pay the
\$45 TSA ConfirmID fee or
visit [tsa.gov/ConfirmID](https://www.tsa.gov/ConfirmID).

Acceptable Forms of Identification* Include:

- U.S. Passport or Passport Card
- U.S. Department of Defense ID
- DHS Trusted Traveler Card
- REAL ID or Enhanced Driver's License
- Enhanced Tribal Cards

*Visit [tsa.gov/ID](https://www.tsa.gov/ID) for the full list of acceptable forms of identification.



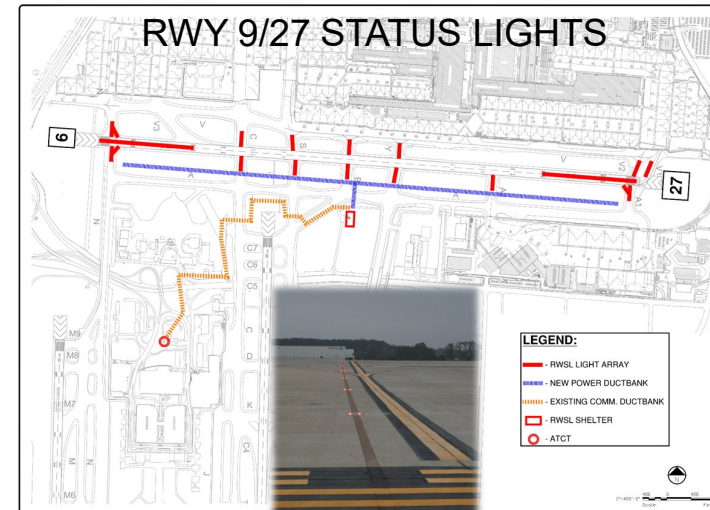
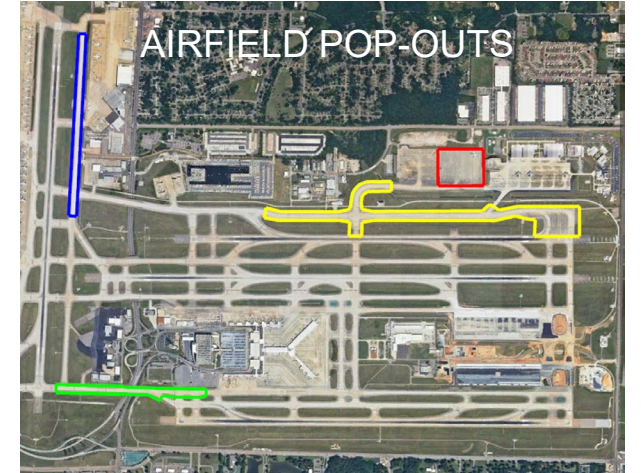
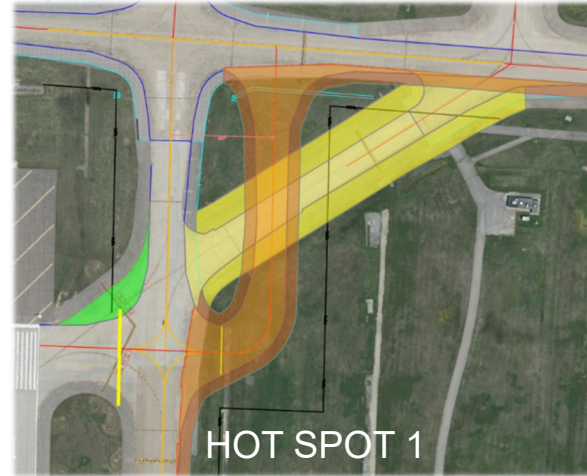
[tsa.gov](https://www.tsa.gov)

Maintenance & Development



Ongoing MEM Airside Projects

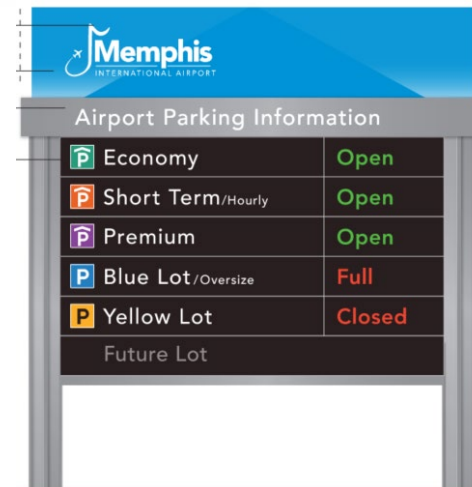
- **Taxiway Bravo/Hot Spot 1**
 - Pre-Construction Activities Underway
 - Construction Start: Early 2026
 - Project Completion: Late 2026
- **Runway 9/27 Status Lights**
 - Design Complete
 - Rebid 1/20/26
 - Construction Start: Mid 2026
 - Project Completion: Late 2026/Early 2026
- **Airfield Popouts (Taxiway Yankee)**
 - Finalizing Design & Phasing
 - Construction Start: 2027/2028
 - Working with FAA on timing



Ongoing MEM Landside Projects

- **Parking Information Signage**
 - Design complete December 2025
 - Construction Early/Mid 2026
- **Parking Guidance System (Economy & Short/Long Term Garages)**
 - Project Underway
 - Approx. 12-Month Construction Duration
 - Will require coordinated closures of parking areas within the garages
- **Rotunda Trash Chutes**
 - Construction Underway
 - Completion Early January 2026
 - Training and Activation Late January 2026
- **CONRAC Facility/Garage**
 - Programming/Preliminary Design Underway
 - Final Design & Construction Timing TBD

CONRAC



Memphis INTERNATIONAL AIRPORT	
Airport Parking Information	
Economy	Open
Short Term/Hourly	Open
Premium	Open
Blue Lot/Oversize	Full
Yellow Lot	Closed
Future Lot	

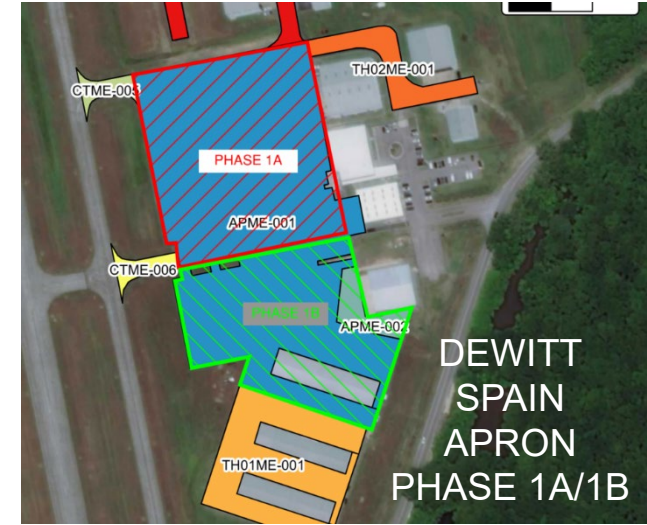
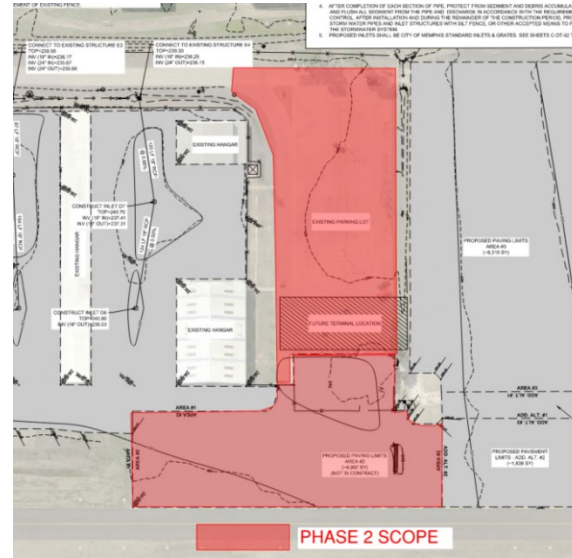
PARKING INFORMATION SIGNAGE



Ongoing GA Projects

- **Charles Baker Airport Terminal**
 - 83% Complete.
 - Project completion expected Early 2026
- **Charles Baker Airport Taxiway/Apron Pavement Rehabilitation – Phase 2**
 - Phase 1 is Completed / Phase 2 is Under Design
 - Phase 2 includes rehabilitating apron around the fuel farm and the terminal parking lot
 - Phase 2: Early 2026 Bidding / Mid 2026 Construction
- **DeWitt Spain Airport Apron Rehabilitation – Phase 1B**
 - 90% Complete / Punchlist Efforts

BAKER APRON PHASE 2





TAKE OFF WITH US



Memphis
INTERNATIONAL AIRPORT