



TAKE OFF WITH US

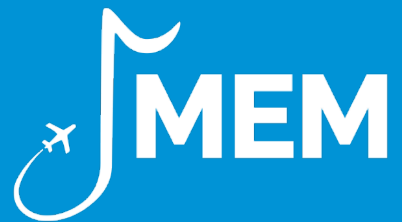
Memphis

INTERNATIONAL AIRPORT

Operations Report

June 18, 2026

Service Spotlight



Recognition

Destiny Nathan and Tasha Lewis – Delta Airlines

Am sure you get a lot of emails that are not pleasant, but thought I would write and share with you the EXCELLENT service by Destiny and Tasha in the Lost and Found/Lost Baggage department at Delta - Memphis International Airport. I fell asleep on a flight last night from Atlanta to Memphis and put my Ipad in the pocket in front of my seat. Jumping up once the plane landed, I raced out and forgot it.

I filled out the website lost item form, but thought I would go by the airport this morning and see if I could get some assistance. Destiny and Tasha were very helpful and Destiny even walked me through the concourse trying to find the Ipad during her lunch break. We did finally locate it and I am extremely grateful.

They did not have to call all the different departments and ask if they had it. They did not have to walk to the other airlines to see if they had it. They did not have to spend the time they did, and yet they happily did.

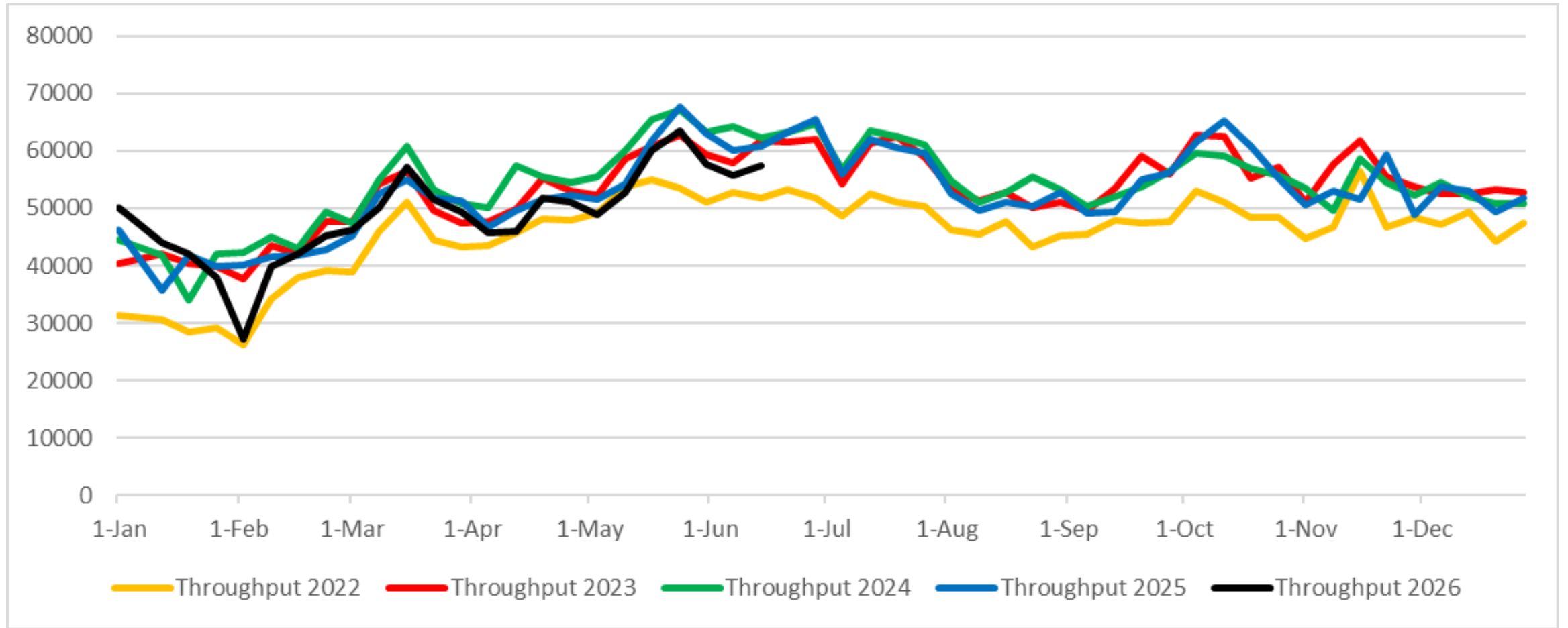
It is service like this that goes above and beyond that will keep me and my family as loyal Delta customers.

TSA Activity Recap





MEM Weekly Checkpoint Throughput Comparison





Checkpoint Metrics

May

- Total Throughput – 255,118; -5.1% compared to May 2025. -8.4% compared to May 2024.

Memorial Day Holiday Travel Week (Sun –Sat, 5/17-5/23)

- Total Throughput – 63,531; -6.0% compared to same week in 2025. Historically, this is the busiest travel week of the year at MEM.

Memorial Day Holiday Weekend Travel Period (Thurs – Tues, 5/21-5/26)

- Total Throughput – 52,745; -6.5% compared to the same period in 2025.

June

- Total Throughput through June 15th – 121,322; -6.4% compared to same period in 2025.

Operations, Maintenance & Development



Terminal Operations

Community fun at MEM – We would love to see fun in your spaces to celebrate with us

June 19th –  SPECIAL OLYMPICS
USA GAMES
MINNESOTA 2026

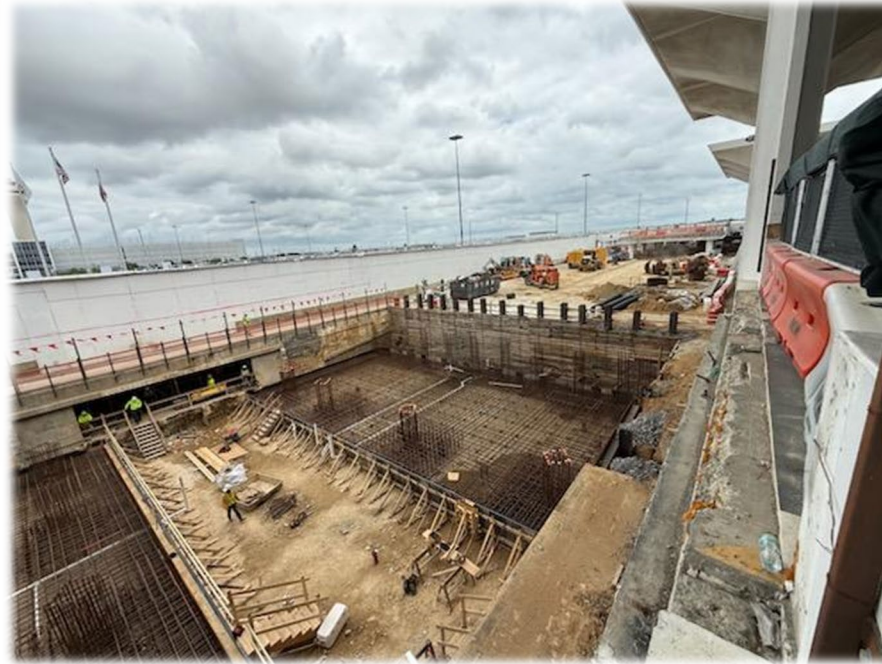
June 21st –



June 25th –  Airport
Workers Day
Moving what matters

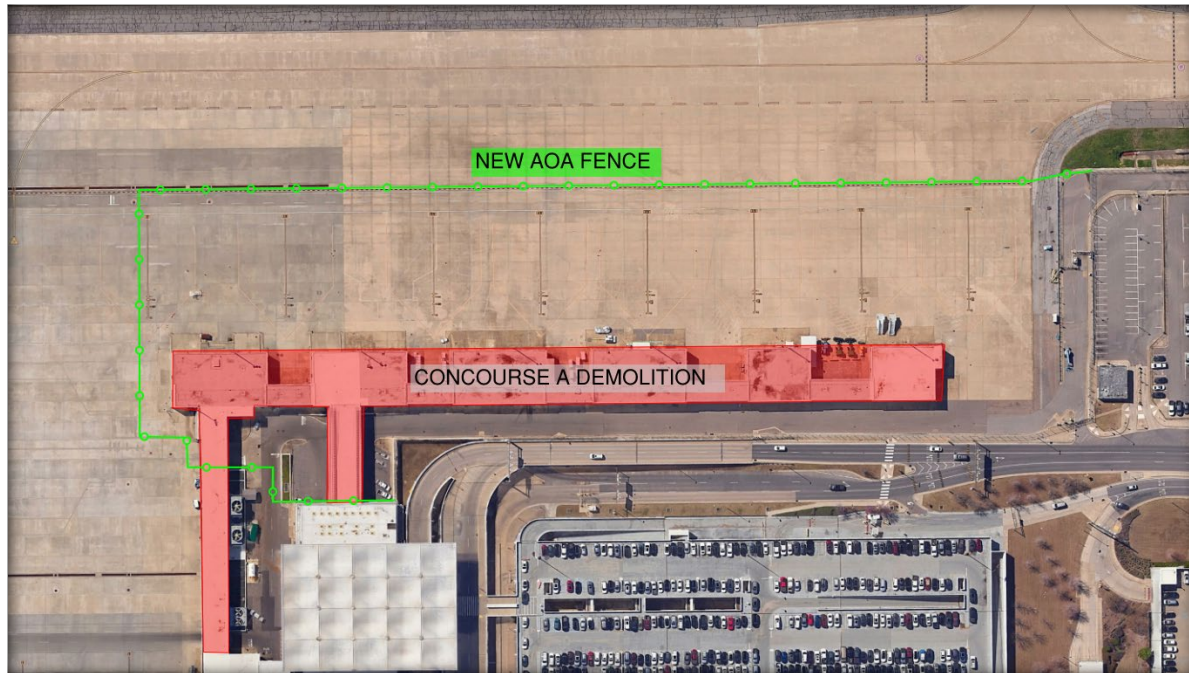
TMSP – Outer Road – Demo/Replacement

- Outer Roadway Demolition preparation efforts started on September 10, 2025.
- Drilling has started for the new roadway structure.
- Terminal B Pedestrian Tunnel closed on 10/21/25. Unforeseen conditions have pushed the tunnel opening date TBD.



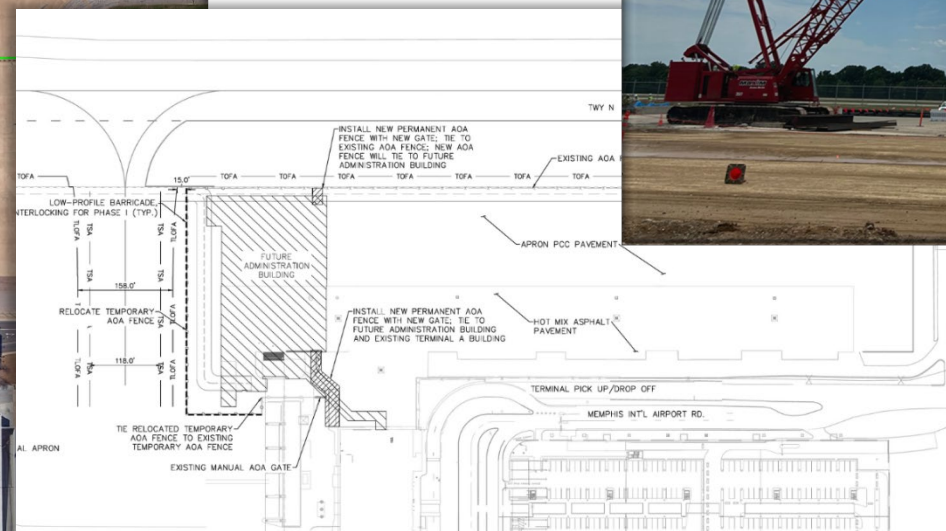
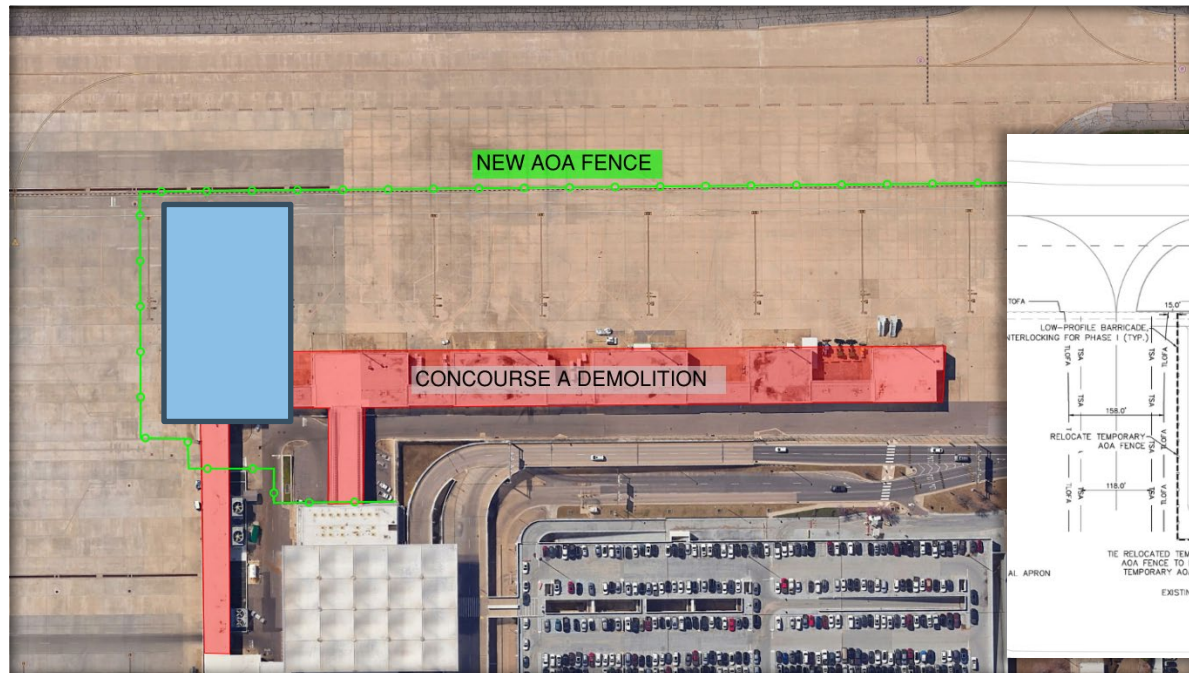
TMSP – Concourse A Demolition

- New AOA/Perimeter Fence completed
- Demolition work started July 8th.
- Project will make way for new Administration Building and future CONRAC Facility
- ❖ **IMPACTS:**
 - **RON Gates R09 to R16 Permanently Closed on 1/13/25**
 - **West Turnstile Closed on 5/5/25**
 - **Increased construction traffic on around the Concourse Vehicle Service Road**



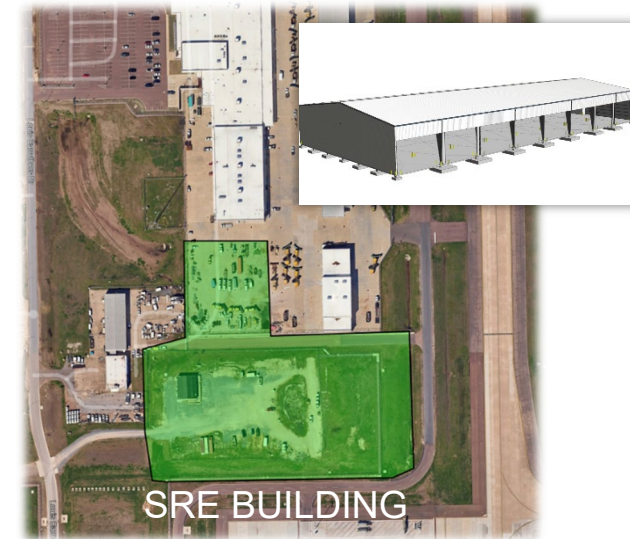
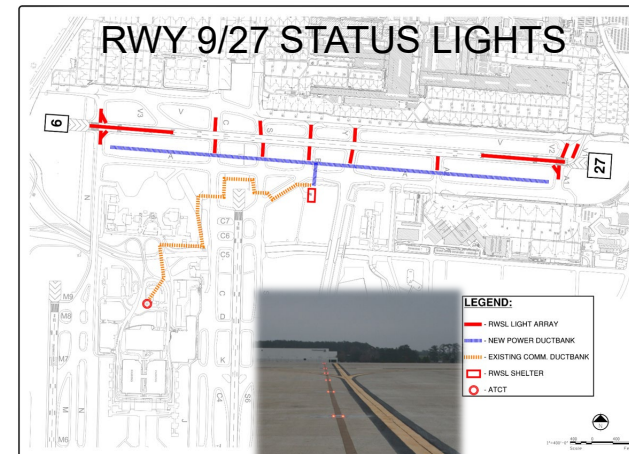
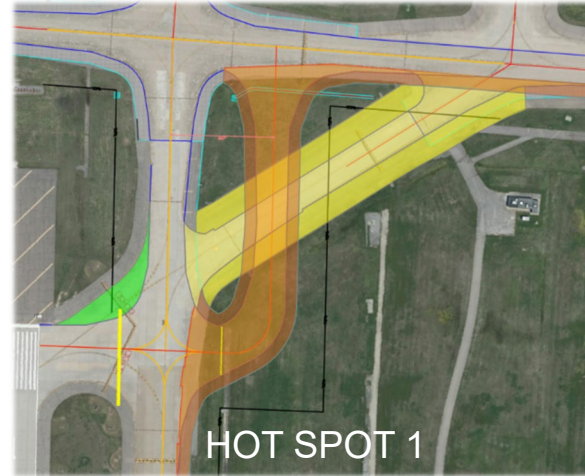
TMSP – Administration/CBIS Building

- New MSCAA Administration Building
- Relocating MSCAA Administration offices impacted by TMSP project.
- Bottom level houses the new CBIS
- Steel Erection Underway
- Completion Late 2027
- ❖ **IMPACTS:**
 - **Continued construction traffic on around the Concourse Vehicle Service Road**
 - **Large crane requiring NOTAMs**



Ongoing MEM Airside Projects

- **Taxiway Bravo/Hot Spot 1**
 - Project has been rebid.
 - Advertised: 5/11/26 / Bids Due: 6/18/26
- **Runway 9/27 Status Lights**
 - Pre-Construction / Procurement Activities
 - Construction Start: Mid-Late 2026
 - Project Completion: Spring 2027
- **Airfield Popouts (Taxiway Yankee)**
 - Finalizing Design & Phasing
 - Construction Start: 2027/2028
- **Snow Removal Equipment (SRE) Storage Building**
 - Phase 1 is a Site Preparation Package
 - Construction underway
 - Phase 2 is for the Storage Building (1st Phase)
 - Advertised: 5/26/26 / Bids Due: 6/25/26
 - Late 2026 to Early 2027 Construction
- **18R Precision Approach Path Indicator (PAPI)**
 - Under Design
 - Fall 2026 Construction



Ongoing MEM Landside Projects

- **Parking Information Signage**
 - Design being updated based on airport name change.
 - Late 2026 Construction
- **Parking Guidance System (Economy & Short/Long Term Garages)**
 - Project Underway / Levels 4-6 Economy Garage
 - Approx. 12-Month Construction Duration
 - Will require coordinated closures of parking areas within the garages
- **Rotunda Trash Chutes**
 - Construction 95% Complete
 - Final control set up and commissioning
 - Training and Activation Late June/Early July 2026
- **East Parking Lot – Phase 5**
 - Contract Executed / Pre-Construction Phase
 - Fall 2026 Completion
- **CONRAC Facility/Garage**
 - Programming/Preliminary Design Underway
 - Final Design & Construction Timing TBD

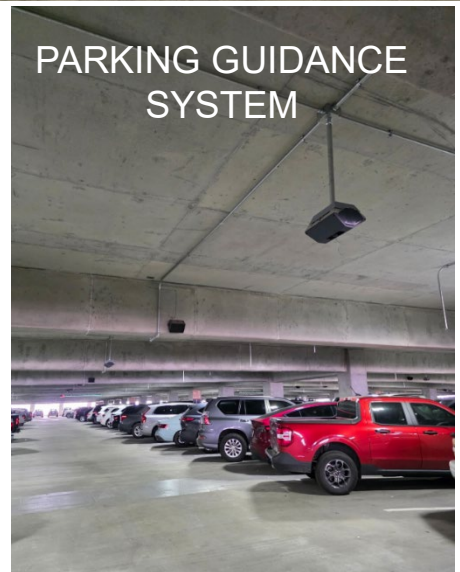
EAST PARKING LOT



TRASH CHUTES

Airport Parking Information		MEM
Economy		Open
Short Term/Hourly		Open
Premium		Open
Blue Lot/Oversize		Full
Yellow Lot		Closed

PARKING INFORMATION SIGNAGE



PARKING GUIDANCE SYSTEM



Upcoming Project Actions

First Quarter, FY 2027

- Taxiway Bravo – Hot Spot REBID
- Airport Construction Management, Administration, and Inspection Services – Consultant Selection
- On-Call Designer – Consultant Selection
- Snow Removal Equipment Building (Phase 2 – Building Package) – Construction Contract
- TMSP – CMAR Early Release Package for Phase 0 & Long Lead MEP Equipment – Construction Amendment
- Parking Information Signs – Construction Contract

Second Quarter, FY 2027

- TMSP – CMAR Terminal GMP – Overall Terminal Project





TAKE OFF WITH US

JMEM